

Presidents and the U.S. Economy:
An Econometric Exploration

by

Alan S. Blinder, Princeton University
Mark W. Watson, Princeton University

Griswold Center for Economic Policy Studies
Working Paper No. 241, July 2014

For advice on and help with obtaining data, and for making replication files available to us, we thank Steve Davis, William Dunkelberg, Wendy Edelberg, Otmar Issing, Jan Hatzius, Karl Mertens, Nolan McCarty, Valerie Ramey, Morten Ravns, Eric Sims, Nora Traum, and Egon Zakrajšek. We also thank Ray Fair, James Hamilton, Lutz Kilian, John Londregan, Edward Nelson, Jeremy Piger, and participants at workshops at Princeton and elsewhere for many useful comments. None of them, of course, bears any responsibility for the views expressed here. Replication files can be downloaded from <http://www.princeton.edu/~mwatson>.

ABSTRACT

The U.S. economy has grown faster—and scored higher on many other macroeconomic metrics-- when the President of the United States is a Democrat rather than a Republican. For many measures, including real GDP growth (on which we concentrate), the performance gap is both large and statistically significant, despite the fact that postwar history includes only 16 complete presidential terms. This paper asks why. The answer is not found in technical time series matters (such as differential trends or mean reversion), nor in systematically more expansionary monetary or fiscal policy under Democrats. Rather, it appears that the Democratic edge stems mainly from more benign oil shocks, superior TFP performance, a more favorable international environment, and perhaps more optimistic consumer expectations about the near-term future. Many other potential explanations are examined but fail to explain the partisan growth gap.

Alan S. Blinder
Princeton University
blinder (at) princeton (dot) edu

Mark W. Watson
Princeton University
mwatson (at) princeton (dot) edu

July 2014

An extensive and well-known body of scholarly research documents and explores the fact that macroeconomic performance is a strong predictor of U.S. presidential election outcomes. Scores of papers find that better performance boosts the vote of the incumbent's party.¹ In stark contrast, economists have paid scant attention to predictive power running in the opposite direction: from election outcomes to subsequent macroeconomic performance. The answer, while hardly a secret, is not nearly as widely known as it should be: The U.S. economy grows notably faster when a Democrat is president than when a Republican is.²

We begin in Section 1 by documenting this fact, which is not at all “stylized.” The U.S. economy not only grows faster, according to real GDP and other measures, during Democratic versus Republican presidencies, it also produces more jobs, lowers the unemployment rate, generates higher corporate profits and investment, and turns in higher stock market returns. Indeed, it outperforms under almost all standard macroeconomic metrics. By some measures, the partisan performance gap is startlingly large--so large, in fact, that it strains credulity, given how little influence over the economy most economists (or the Constitution, for that matter) assign to the President of the United States.

Most of the paper is devoted to econometric investigations of possible explanations of the Democrat-Republican performance gap in annualized real GDP growth—which we find to be 1.8 percentage points in postwar data. In discussing this large gap with economists, we frequently encounter the objection that the partisan difference must be statistically insignificant owing to the paucity of presidential administrations. That is not true, as we show in Section 1.

In Section 2, we ask whether the partisan gap is spurious in the sense that it is really either the makeup of Congress or something else about presidents (other than their party affiliations) that matter for growth. The answers are no. Section 3 investigates whether trends (Democrats were in the White House more often when trend growth was high) or inherited initial conditions (Democrats were elected more often when the economy was poised for relatively rapid growth) can explain what appears to be a partisan gap. They cannot.

¹ The literature is large in economics and voluminous in political science. Ray Fair's (1978, 2011) work may be the best known to economists.

² See, for example, Alesina and Sachs (1988), Bartels (2008, Chapter 2), Comiskey and Marsh (2012). An important precursor is Hibbs (1977). Earlier evidence on the unemployment rate and other cyclical indicators motivated some of the economic literature on political business cycles; see, for example, Alesina and Roubini (1997), and Faust and Irons (1999).

Sections 4 and 5 comprise the heart of the paper. There we examine possible economic mechanisms that might explain the partisan growth gap, including factors that might be construed as “just good luck” and factors that might be interpreted as superior economic policy. We find that government spending associated with the Korean War (which began under a Democrat and ended under a Republican) explains part of the 1.8 percentage point partisan gap, but that the gap remains large (1.4 points) even after excluding the Korean War administrations. We find that oil shocks, productivity shocks, international growth shocks, and (perhaps) shocks to consumer expectations about the future jointly explain about half of the partisan gap. The first three of these look a lot more like good luck than good policy. In sharp contrast to these explanations, our empirical analysis finds that fiscal or monetary shocks do not explain the partisan growth gap.

Section 6 looks briefly at four other advanced countries: Canada, France, Germany, and the UK. Only Canadian data display a similar partisan growth gap. Finally, Section 7 provides a brief summary of what we (think we’ve) learned.

1. The stark facts

1.1 Gross domestic product growth and recessions

For most of this paper, the dataset begins either when U.S. quarterly NIPA accounts begin, in 1947:Q1, or at the start of Harry Truman’s elected term and extends through 2013:Q1. In many of our calculations, we group observations by four-year presidential terms; so the sample contains seven complete Democratic terms (Truman-2, Kennedy-Johnson, Johnson, Carter, Clinton-1, Clinton-2, and Obama-1) and nine complete Republican terms (Eisenhower-1, Eisenhower-2, Nixon, Nixon-Ford, Reagan-1, Reagan-2, Bush I, Bush II-1, and Bush II-2), where the suffixes denote terms for two-term presidents.

During the 64 years that make up these 16 terms, real GDP growth averaged 3.33% at an annual rate. But the average growth rates under Democratic and Republican presidents were starkly different: 4.35% and 2.54% respectively. This 1.80 percentage point gap (henceforth, the “D-R gap”) is astoundingly large relative to the sample mean. It implies that over a typical four-year presidency the U.S. economy grew by 18.6% when the president was a Democrat, but only by 10.6% when he was a Republican. And the variances of quarterly growth rates are roughly

equal (3.8% for Democrats, 3.9% for Republicans, annualized), so Democratic presidents preside over growth that is faster but not more volatile.³

The estimated D-R growth gap is sensitive to the presumed lag between a presidential election and any possible effects of the newly-elected president on the economy. In our main results, the first quarter of each president's term is attributed to the previous president. While we focused on this one-quarter lag on *a priori* grounds, we did repeat the calculation with lags of zero, two, three, and four quarters. Results were similar, although using lags of zero, two, three, and four quarters all lead to smaller estimated D-R gaps.⁴

Figure 1 displays the story graphically. Panel A shows average growth rates by presidential term. While there is substantial variation in growth rates (from over 6 percent for Truman-2 to under 1 percent for Bush II-2), the D-R gap is apparent. Panel B tells the same story in a slightly different way, by organizing the data by presidencies rather than by terms (treating both the eight Kennedy-Johnson years and the eight Nixon-Ford years as single presidencies, and with the data on Truman extended back to 1947:Q2). It is clear at a glance that GDP growth rises when Democrats get elected and falls when Republicans do. There are no exceptions, although the Carter-to-Reagan transition is almost a dead heat (3.6% to 3.5%).

Closer inspection of the quarterly data reveals that the five highest growth rates in the sample all came under Democratic presidents, while four of the five lowest came under Republicans. But the D-R gap is not the result of a handful of outliers. For example, dropping the four largest and four smallest quarterly growth rates for both Democrats and Republicans reduces the D-R gap only to 1.60 percentage points.

The D-R gap can also be illustrated by rank-ordering the growth performances of all 16 terms in the sample (Table A.3 in the appendix). Six of the eight above-average presidential terms, including the top four, were Democratic; seven of the eight below-average terms were Republican.

Eyeballing either Figure 1 or Table A.3 may give the impression that a sizable share of the overall D-R gap comes from the Truman and Kennedy-Johnson administrations. That impression

³ In addition, the Republican distribution of quarterly growth rates is skewed to the left while the Democratic distribution is skewed to the right. The difference in *median* growth rates (not *means*) is about 1 percentage point. Appendix B provides a histogram and additional summary statistics.

⁴ See Appendix Table A.2. Political scientists seem to prefer lags of one year *or more*. (See Bartels (2008), Comiskey and Marsh (2012).) Such lags struck us as too long on *a priori* grounds. Furthermore, as will be shown later, much of the partisan growth gap comes in the first year of each presidency. So a four, five, or six quarter lag would mask most of it.

is correct. If we estimate the gap using data ending right after the Eisenhower presidency, it is a whopping 4.14 percentage points (t -ratio = 2.6 using Newey-West standard errors described below). If we end the subsample after the Nixon-Ford administrations, the estimated gap is 3.17 percentage points ($t = 3.4$). Ending after the Bush-I administration yields an estimate of 2.36 percentage points ($t = 2.8$). Finally, if we consider a subsample extending from Truman through Bush II, the D-R gap is 2.13 percentage points ($t = 3.3$). Clearly, the partisan gap has been mostly shrinking over time. But at 1.80 percentage points ($t = 2.8$) in the full sample, it remains large and significant.

NBER recession dating gives an even more lopsided view of the D-R difference. Over the 256 quarters in these 16 terms, Republicans occupied the White House for 144 quarters, Democrats for 112. But of the 49 quarters classified by the NBER as in recession, only eight came under Democrats versus 41 under Republicans.⁵ Thus, the U.S. economy was in recession for 1.1 quarters on average during each Democratic term, but for 4.6 quarters during each Republican term.

These results for GDP and quarters-in-recession are summarized in Panel A of Table 1. The table shows the Democratic and Republicans averages, the D-R gap (labeled “Difference”), and both standard errors and p -values to gauge statistical significance. Standard errors are computed in two ways. The first, shown in parentheses (), clusters observations by presidential terms, which allows arbitrary correlation within a term but no correlation between terms. The second, shown in square brackets [], uses a standard HAC formula, which allows conditional heteroskedasticity and (limited) correlation within and between terms. In both cases, statistical significance for the D-R difference can be assessed by using the usual t -statistic.⁶ For the D-R gap in GDP growth, the two standard errors are almost identical; each yields a t -statistic greater than 2.7. For quarters-in-recession, the two standard errors differ a bit; but both yield t -statistics with absolute values above 3. Thus, the t -statistics imply a statistically significant D-R gap in economic performance despite the small number of observations.

⁵ As before, the first quarter of each presidency is “charged” to the previous president. Thus, for example, the recession quarter 2001:1 is charged to Bill Clinton and 2009:1 is charged to George W. Bush.

⁶ The effective sample size for the t -statistic constructed with clustered standard errors is the number of administrations ($n_{Dem} = 7$ and $n_{Rep} = 9$). Conservative inference can be carried out using the critical value from the Student’s t distribution with $\min[(n_{Dem}-1), (n_{Rep}-1)] = 6$ degrees of freedom. (The 5% two-sided critical value from the t_6 distribution is 2.5.) Ibragimov and Müller (2010, 2011) show that this procedure remains conservative under heteroskedacity.

We also assessed statistical significance by using a non-parametric test that involves random assignment of a party label (D or R) to each of the sixteen 16-quarter blocks of data in the sample. Specifically, we assigned nine Republican and seven Democratic labels randomly to each four-year period (e.g., 1949:Q2-1953Q1, 1953:Q2-1957:Q1, etc.) and then computed the difference in average growth rates under these randomly-assigned “Democratic” and “Republican” terms. Doing so enables us to construct the distribution of differences in average growth rates under the null hypothesis that political party and economic performance are independent (because party labels are randomly assigned to each term). This distribution can then be used to compute the *p*-value of the difference in the *actual* growth rates under the null. As shown in the final column of Table 1, this *p*-value is 0.01 for GDP, which corresponds to the probability of observing an absolute difference of 1.80% (the actual value) or larger under random assignment of party. The *p*-value for quarters-in-recession is also 0.01; so the lopsided realization of recessions is similarly unlikely under the assumption that party and economic performance are independent.

1.2 Other indicators

The finding of a large partisan gap is not peculiar to the time series on real GDP growth and NBER recession dates. The other panels of Table 1 summarize results for a wide variety of other indicators of economic performance.

Panel B considers alternative measures of aggregate output. The D-R gap for the growth rate of GDP *per capita*, which corrects for any differences in population growth, is essentially the same as for GDP itself (1.76% versus 1.80%). The D-R gap is somewhat larger in the nonfarm business sector (2.15%) and much larger for industrial production (3.77%). Each of these partisan growth gaps is statistically significant.

Panel C considers employment and unemployment. The D-R gap in the annual growth rate of payroll employment is 1.42 percentage points, the gap in employee hours in nonfarm businesses is somewhat larger (1.65 points), and both are statistically significant. Somewhat puzzling, given these results, the partisan gap for employment is much smaller in the household survey—just 0.56 percentage point—and not statistically significant at conventional levels.⁷ The average unemployment rate is lower under Democrats (5.6% vs. 6.0%), but that difference is also

⁷ Examination of the payroll and household employment series shows two sustained episodes in which employment growth in the establishment survey exceeded employment growth in the household survey substantially and persistently; one was late in the Truman administration, the other was in the Kennedy-Johnson boom.

small and not statistically significant. There is, however, a very large and statistically significant difference in the *change* in the unemployment rate, computed as the average unemployment rate in the final year of the term minus the average value in the final year of the previous term.

During Democratic presidential terms, the unemployment rate *fell* by 0.8 percentage points, on average, while it *rose* by 1.1 percentage points, on average, during Republican terms--yielding a D-R gap of -1.9 percentage points.

Delving into the sectoral details (shown in Appendix Table A.4), the growth rates of *every* major component of real GDP except exports were higher under Democratic rather than Republican presidents, although the margins are small and statistically insignificant in a number of cases. The table reveals that much of the Democratic growth advantage comes from higher spending on consumer durables and private investment, especially nonresidential fixed investment, where the partisan gap is 4.8 percentage points. Another large growth gap (5.1 percentage points) shows up in federal defense spending. But because defense spending is so volatile, even that large a difference is not statistically significant. We return to defense spending later.

Partisan differences extend well beyond the standard indicators of real growth and employment. For example, Panel D of Table 1 shows that annualized stock market returns for firms in the S&P 500 are 5.4 percentage points higher when a Democrat occupies the White House than when a Republican does.⁸ But given the extreme volatility of stock prices, even differences that large are statistically significant at only the 17% level. The corporate profit share of gross domestic income was also higher under Democrats: by 5.6% versus 4.7% (*p*-value=0.03). Though business votes Republican, it prospers more under Democrats.

Panel E shows that both real wages (compensation per hour in the nonfarm business sector) and labor productivity increased slightly faster under Democrats than Republicans, although neither D-R gap is statistically significant. Growth in total factor productivity was much faster under Democrats (1.9% versus 0.9% for Republicans, with a *p*-value of 0.08), although the gap nearly disappears when TFP is adjusted for resource utilization. We discuss productivity as a potential explanation of the D-R gap in Section 5 below.

⁸ The partisan gap in stock market returns seems to have attracted a lot more attention—at least from economists—than the partisan gap in GDP growth. See, for example, Santa-Clara and Valkanov (2003) and other references cited there. For much earlier evidence, see Allvine and O’Neill (1980).

Moving yet farther afield, and now using Congressional Budget Office data which are available only from the Kennedy-Johnson term through 2012:Q3, the structural federal budget deficit has been, on average, smaller under Democratic presidents (1.5% of potential GDP) than under Republican presidents (2.2% of potential GDP), although the difference is far from statistically significant. (See Panel F.) And Bartels (2008) (not shown in the table) has documented that income inequality rises under Republicans but falls under Democrats.

The only notable exception to the rule that Democrats outperform Republicans seems to be inflation, where the economy fares about equally well under presidents of either party. For example, Panel of G of Table 1 shows that while the average inflation rate was slightly lower under Democratic presidents (2.97% versus 3.32% using the PCE deflator; 2.88% versus 3.44% using the GDP deflator), neither difference comes close to statistical significance. Inflation does show a tendency to *rise* under Democrats and *fall* under Republicans, however. For example, using the PCE deflator, inflation rises on average by 1.05 percentage points during a Democratic presidency, falls by 0.83 percentage point during a Republican presidency, and the difference of 1.88 percentage points is statistically significant at the 12% level.

Of course, weaker GDP growth and lower employment growth under Republicans could be responsible for the differential inflation performance. A simple back-of-the-envelope calculation suggests that it is. With unemployment averaging 0.4 percentage point less under Democrats, traditional estimates of the Phillips curve (e.g., Staiger, Stock, and Watson (2001)) suggest that the *change* in inflation should be roughly 0.1 percentage points more *per quarter*, or about 1.6 percentage points over a four-year presidential term—which is close to what we find.

Given the findings on inflation, it is perhaps not surprising to find (in Panel H) that short-term nominal interest rates are a bit lower under Democratic presidents (though not significantly so) but that they tend to rise under Democrats and fall under Republicans. This last difference is very large (3.2 and 4.4 percentage points) and highly significant. We will return to interest rate differences when we consider monetary policy in Section 5.

From here on, we concentrate attention on real GDP growth.

1.3 The D-R gap over a longer historical period

Official quarterly GDP data begin only in 1947, but both the nation and the economy date back much further. What happens if we extend the data back in time? We know that the Democratic-Republican gap would widen notably if we included the long presidency of Franklin

D. Roosevelt, for real GDP growth from 1933 to 1946 averaged a heady 7.4% per annum. Going back to Hoover would also boost the measured D-R gap. But what about earlier U.S. history?

Owang, Ramey, and Zubairy (2013), building on previous work by Balke and Gordon (1989), construct a quarterly real GDP series that dates all the way back to 1875. For the 72-year period spanning 1875:Q1 through 1947:Q1, the average GDP growth rates in their data are 5.15% when Democrats sat in the White House (119 quarters) and 3.91% when Republicans did (169 quarters).⁹ That D-R growth gap of 1.24 percentage points is smaller than the postwar gap, but still noteworthy. Similarly, the NBER says the U.S. economy was in recession in 133 of those 288 historical quarters (46% of the time). But 94 of those recessionary quarters came under Republican presidents (56% of the time) versus only 39 under Democratic presidents (33% of the time). Thus our main facts seem to be far from new.

The Democratic growth edge over the 1875-1947 period is, however, entirely due to the economy's excellent performance under Franklin D. Roosevelt. Excluding the FDR years, growth was actually higher under Republicans. So one might say that higher growth under Democrats began with Hoover.

2. But might it actually be...?

Having established the basic fact that the U.S. economy has grown faster under Democratic than Republican presidents (see Table 1), we ask in this short section whether the president's party affiliation might actually be standing in for something else. For example, might the key difference really be some presidential trait other than his party affiliation? Or might the partisan makeup of Congress actually be the key ingredient? The answers, as we will see next, are no.

2.1 Other presidential traits

The four top presidential terms, ranked by GDP growth, are all Democratic: Truman's elected term, Kennedy-Johnson, Johnson's elected term, and Clinton's second term. Those four are the foundation of the overall D-R growth gap. But might there be some other characteristic, shared by these presidents, that explains the differential growth performance better? For example, maybe younger-than-average presidents--a group that includes Kennedy, Johnson, and

⁹ Until Eisenhower, presidents were inaugurated on March 4 instead of January 20. So, for the historical data, we attributed the first *two* quarters of the calendar year to the previous president.

Clinton--do better. (They do.) Or maybe presidents who were once members of Congress--a group that includes Truman, Kennedy, and Johnson--do better. (They also do.)

Table 2 displays average GDP growth rates for presidents grouped by various attributes: political party (our focus), prior experience as either a member of Congress or as a governor, and whether the president was younger or taller than average.¹⁰ The first row of the table repeats our central fact. The next row contrasts growth under the seven presidents with congressional experience (3.84 percentage points) with the nine without (2.94 percentage points). The difference is sizable (0.91 percentage points), but not statistically significant. The next row compares the administrations of former governors to non-governors. Growth was marginally lower under former governors, but the difference falls far short of statistical significance. The final two rows sort presidents by age and height (top half vs. bottom half). Growth is higher under younger and taller presidents, but again the differences are not statistically significant. Overall, the table shows systematic differences in performance associated with the party of the president, but little evidence of systematic differences associated with other presidential attributes.

2.2 Congress

We mentioned the Constitution earlier because it assigns the power of the purse—and most other powers as well—to Congress, not to the president. Could the key partisan difference really be which party controls *Congress* rather than which party controls the *White House*? The answer is no. The rightmost column of Table 3 displays average GDP growth rates when the Democratic Party controlled both houses of Congress, when control of the two houses was split (regardless of which party controlled which house), and when the Republican Party controlled both houses. Average growth was highest when Democrats controlled Congress (3.47%), but the difference with Republican control (3.36%) is trivial. The table shows a further breakdown of average GDP growth rates by president and by partisan control of Congress. Growth was highest when Democrats controlled both houses of Congress and the White House (4.69%) and next highest when a Democrat was president and Republicans controlled Congress (3.88%), although the difference between these two averages is not statistically significant. In contrast, average growth under Republican presidents was less than 3% regardless of which party controlled Congress. Table 3 suggests that it's been the president, not Congress, that mattered.

¹⁰ Most of these data come from King and Ragsdale (1988), updated by us.

3. Trends and initial conditions

We next ask whether the D-R gap could stem from different trend growth rates under Democratic and Republican administrations, or whether Democrats were more likely than Republicans to be elected when the economy was poised for a period of rapid growth (so that causality runs from growth to party rather than from party to growth).

3.1 Trends

Recall that Figure 1 showed that the three presidential terms with the fastest growth rates came early in the sample while three of the terms with the slowest growth (G.W. Bush's two terms and Obama) came late. Since trend increases in the labor force and productivity were higher in the early post-WWII years than they have been since 2000, part of the difference in the average growth rates under Democrats and Republicans might be explained by the timing of these low-frequency movements.

To investigate this possibility, we computed average growth rate differences after detrending the quarterly GDP growth rates using increasingly flexible trends computed from long two-sided weighted moving averages.¹¹ The flexibility of the estimated trend is adjusted by varying a weighting parameter, κ . $\kappa = \infty$ means that the trend growth rate does not change over the sample period. As κ gets smaller, the weights become more concentrated around the current time period and start looking more like cycles than trends.

Figure A.2 in the appendix plots GDP growth rates and trends computed for different values of κ . The four choices produce trends that range from completely constant at the sample average ($\kappa = \infty$) to quite variable. When $\kappa = 67$, the trend growth rate is 4% through the early 1960s and falls to roughly 2% in the 2000s.

Table 4 shows the average *detrended* growth rates for Democratic and Republican presidents, using these four different definitions of “trend.” In the benchmark specification (constant trend, $\kappa = \infty$), the Democratic and Republican averages are the deviations from the full-sample average. Thus, the average value shown for Democrats is +1.06 percentage points, which is the average growth rate for Democrats (4.35% from Table 1) minus the full-sample average of 3.29%; the average value shown for Republicans is -0.74 percentage point (= 2.54% - 3.29%).¹²

¹¹ The weights are computed using a bi-weight kernel. See Stock and Watson (2012).

¹² The 3.29% figure for the grand mean used here differs slightly from the 3.33% figure cited earlier because, here, we extend the sample all the way back to 1947:2.

The D-R gap is thus 1.80 points, which is, of course, the same value shown in Table 1. For the other trend specifications, the underlying trend is allowed to vary over time, so D-R differences need not match the 1.80 percentage point value reported in Table 1. However, the table shows that results using $\kappa = 100$ or $\kappa = 67$ hardly differ from the benchmark. Indeed, even when $\kappa = 33$, a “trend” that is so flexible that it seems to capture cyclical elements, the estimated D-R gap remains large (1.46 percentage points) and highly significant. In sum, low-frequency factors appear to explain little, if any, of the D-R gap.

3.2 Initial conditions

A different question of timing is whether the Democratic advantage can be attributed to relatively favorable initial conditions. That is, are Democrats more likely to take office just as the economy is poised to take off, and/or are Republicans more likely to take office when the economy is primed for a recession? If so, the direction of causality runs from economic performance to party of the president rather than from party to performance.

Figure 2A provides a first piece of evidence on this question by showing when, within four-year presidential terms, the Democratic advantage is the largest and when it is the smallest. The figure makes it clear that the advantage comes in the first two years, and especially in the first, when the D-R growth gap is over 4 percentage points. The figure also shows (on the far left) the average growth rate in the final year of the *previous* administration. Notice that Democrats inherit growth rates of 1.9% from the final year of the previous term, while Republicans inherit a growth rate of 4.3%--a clear advantage to Republicans.

Figure 2A treats the second term of each two-term presidency (e.g., Eisenhower-2) the same as when a new president from one party replaces an outgoing president from the other party (e.g., Truman-2 to Eisenhower-1). So Figure 2B limits the sample to the eight presidential terms that were preceded by a president from the opposite party. Among the incoming Democratic presidents, that means Kennedy-Johnson, Carter, Clinton-1, and Obama-1. Among Republicans, it means Eisenhower-1, Nixon, Reagan-1, and Bush II's first term. In this restricted sample, *more than 100%* of the four-year advantage occurs in a new president's first year, when the D-R growth gap is 4.8 percentage points--an average of 4.2% in the first year of a new Democratic president versus *minus* 0.6% in the first year of a new Republican president. The figure also shows that Democrats inherit growth rates averaging 0.6% from the final year of the previous Republican president, while Republicans inherit growth rates averaging 3.8% from outgoing

Democrats. Thus the election of a Democrat seems to turn things around on a dime, while the election of a new Republican seems to signal a recession.

Were these turnarounds anticipated? That is, were Democrats elected when future growth was expected to be strong and/or Republicans elected when recessions were imminent? Simple time series calculations suggest not. After all, GDP growth is *positively* serially correlated, so that high growth in year t is more likely to be followed by high growth in year $t+1$ than by low growth. Because Republicans inherit high growth, they should be more likely to experience high growth early in their administrations than Democrats. But Figure 2 indicates just the opposite. Thus, the reverse-causality explanation for the D-R gap is inconsistent with the serial correlation in the data.

But perhaps the serial correlation calculation is too simplistic. Maybe unique factors in the transition years made high growth for new Democratic administrations and low growth for new Republican administrations forecastable. This question is investigated in several ways in Table 5, and the answer appears to be that little, if any, of the D-R gap was forecastable. The first panel shows median GDP growth forecasts from the Survey of Professional Forecasters (SPF). Because the SPF data begin only in 1968, the analysis starts with Nixon's first term. The data come from surveys conducted in the first quarter of each presidential term and pertain to forecasted growth over the next four quarters. For example, the Carter results use the survey conducted in 1977:Q1 and show median growth forecasts for the four quarters from 1977:Q1 through 1978:Q1.¹³ The table also shows actual realized values for growth in the line just below.

With real GDP subject to substantial revisions over time, one issue with using SPF forecasts is the vintage of data the forecasters were attempting to forecast. A standard practice is to compare the forecasts to a vintage that includes only "near term" revisions, and we follow this practice by comparing these forecasts to "actuals" from real time datasets that were available two years after the forecast date. (So, for example, the "actual growth" of real output from 1977:Q1-1978:Q2 is measured using data available in 1979:Q2.)

Real output growth was forecast by the SPF to be essentially the same, on average, over the first years of presidential terms covered in the available sample period: 3.1% for Democrats versus 3.2% for Republicans. In fact, however, Democrats beat the SPF forecasts by 0.4

¹³ Detailed results underlying Table 5 are provided in appendix Table A.5. That table also shows results using the SPF surveys conducted in the second quarter of each administration.

percentage points while Republicans fell short by 2.2 percentage points, leading to actual growth rates of 3.5% for Democrats versus only 1.0% for Republicans.

Perhaps SPF forecasts are not indicative of other forecasts. Panel B of Table 5 shows analogous results using the Federal Reserve's Greenbook forecasts of growth, which are available only for the Nixon/Ford through Bush II-2 terms. SPF and Greenbook forecasts match up well except for the first year of the Reagan presidency, when the SPF forecast was 3.0% but the Greenbook forecast was -0.1%. (Actual growth was far lower than both: -2.5%.)¹⁴ This single large difference explains much of why the Greenbook forecasts shown in the table are, on average, 1 percentage point lower for Republicans, thus accounting for just over a third of the actual D-R gap of 2.7 percentage points.

The remaining panels of Table 5 show results from forecasts constructed from three pure time series models (ARs and VARs) estimated over the full sample. These are not real-time forecasts because they use fully-revised data to estimate models over the full-sample period. But the forecasts do capture the average persistence in the data over the sample.

The time series model forecasts employ the same timing convention as in Panels A and B: forecasts are constructed based on data through the first quarter of each presidential term and pertain to growth over the subsequent four quarters. We consider three models: an AR(4) model for real GDP growth; a VAR(4) that includes GDP growth and a yield curve spread (long-term Aaa corporate bonds minus 3-month Treasury bills¹⁵); and a nonlinear AR model that allows for potential rapid growth ("bounceback") following recessions.¹⁶ Panel C shows results for the time series models over the same sample period (Nixon through Obama-1) as the SPF forecasts. Panel D shows results for the entire sample period (Truman-2 through Obama-1).

The simple AR models forecast *lower* average GDP growth for Democrats than Republicans. This is what you would expect from positive serial correlation in GDP growth and the lower average GDP growth inherited by Democrats; but it suggests a D-R gap in the opposite direction from the facts. The forecasts from the VAR model and the non-linear AR model are mixed; two of the four indicate slightly higher expected growth under Democrats. For example, over the full-sample period, the nonlinear AR model forecasts first-year growth that averages 3.4

¹⁴ Romer and Romer (2000) provide evidence that the Greenbook forecasts of real output growth were more accurate than the SPF over the 1981-1991 sample period.

¹⁵ We use the long-term corporate bond rate because it is available over the entire post-war sample period.

¹⁶ The nonlinear specification augments the AR model with lags of a binary recession indicator, R_t , and interactions of R_t and lags of GDP growth. See, for example, Kim and Nelson (1999) and Morley and Piger (2012).

percentage points for Democrats versus 3.2 percentage points for Republicans. But this difference is tiny compared to the actual 4.1 percentage point D-R gap in first-year average GDP growth.

In sum, with the exception of the Greenbook forecasts for the early part of the first Reagan administration, forecasts suggest little reason to believe that Democrats inherited more favorable initial conditions (in terms of likely future growth) from Republicans than Republicans did from Democrats. The D-R gap cannot be explained by reverse causality.

These findings on forecasts raise an interesting question: Could forecasters *in the past* have improved the accuracy of their GDP growth forecasts by adding an easily observable variable with significant predictive power: the party of the president. At least for AR forecasts, the surprising answer is no (or, more accurately, by only a small and insignificant amount). The reason is that, while the D-R gap is large and reasonably precisely estimated using all the data, it would have been less precisely estimated in real time. Thus, surprisingly, sampling errors would have led to a deterioration in the accuracy of the forecasts.

4. Explaining the partisan growth gap: Methods

Having explored and disposed of a variety of mechanical explanations for why economic growth was so much faster when Democrats occupied the White House, we now turn our attention to economic mechanisms. This section offers two standard frameworks—one historical and the other econometric—that will guide our analysis. We begin with a synopsis of the macroeconomic history of the post-WWII United States. This history provides several candidate factors that might explain the D-R gap. We then outline an econometric specification that we will use in Section 5 to quantify the effects of several of these causal factors.

4.1 A short narrative history

Our data sample spans nine presidential transitions, eight of which were from one party to the other. What do we know about these transitions that might help us explain the large growth differences under Democratic versus Republican presidents?

After the Truman prosperity, which was fueled in part by high spending on the Korean War, Dwight Eisenhower won the 1952 election, determined to end the war. He did so, and the sharp cutbacks in defense spending were the main reason for the 1953-1954 recession. Later, even more (albeit milder) defense cutbacks contributed to a short-but-sharp recession in 1957-1958. So

growth plummeted from the Truman years to the Eisenhower years, and defense spending seems to have been a major cause.

The third Eisenhower recession (1960-1961) paved the way for the election of President John F. Kennedy, and subsequently for the Kennedy-Johnson tax cuts--the first example of deliberate countercyclical fiscal policy in U.S. history. Those tax cuts ushered in a long boom, raising the growth rate under Kennedy-Johnson far above Eisenhower levels. The 1960s boom went too far, however, when Vietnam War spending helped to bring on the highest U.S. inflation rates since the 1940s. The war, the inflation, and the anti-inflationary monetary and fiscal policies promulgated in reaction to it helped Richard Nixon win the White House in 1968. So, once again, fiscal policy—both tax cuts and defense spending--appears to have played a major role.

The contractionary policies left over from Lyndon Johnson's belated efforts to fight inflation gave Nixon a recession early in his first term. But by 1972, aided by both monetary and fiscal stimulus, the economy was booming again, and Nixon was reelected in a landslide.¹⁷ That all changed, however, and inflation rose again, after OPEC I struck in late 1973. So when he resigned in 1974, Nixon left a troubled economy to Gerald Ford. On balance, growth under Nixon-Ford was markedly slower than under Kennedy-Johnson, and the oil shock of 1973-1974 was one major reason.

The poor economy, plus the adverse popular reaction to Ford's pardon of Nixon, contributed to Ford's defeat by Jimmy Carter in the close election of 1976. While Carter is remembered for presiding over a weak economy, that memory is faulty. Figure 1 and Table 1 remind us that real GDP growth under Carter was higher than it had been under Ford and about the same as it would be under Reagan—despite a disastrous 1980:Q2, caused by the imposition of credit controls that were quickly removed. Carter's main problem was high inflation—brought on, in part, by OPEC II in 1979-1980. Again, we are pushed to think about oil shocks.

Ronald Reagan's presidency is remembered for large tax cuts, large budget deficits, and the long boom of the 1980s. But it began with a severe recession. Over Reagan's full eight years, GDP growth averaged just 3.5%, falling just shy of the Carter performance. Thanks to the 1990-1991 recession—which is often attributed to tight money and a spike in oil prices—growth was substantially slower during George H. W. Bush's term.

¹⁷ The political business cycle literature leans heavily on this episode, which may have been *sui generis*.

Bill Clinton presided over the long boom of the 1990s, which was likely started by falling interest rates—in part, a product of Clinton’s deficit-reduction efforts—and helped along by both permissive Federal Reserve policy and the tech boom. The latter led to surges in investment spending, stock prices, and productivity. The productivity surge, in turn, helped hold down inflation as the unemployment rate fell as low as 3.9%, a rate not seen since the late 1960s. This episode highlights the importance of fiscal policy and productivity shocks.

Unfortunately for Clinton’s successor, George W. Bush, a stock market crash began in 2000 and its effects lingered into his first term, probably precipitating the 2001 recession. Although that recession was extremely mild, recovery from it was slow. Then the financial crisis struck in late 2008 (although the NBER dates the Great Recession as starting in December 2007). On balance, the Bush II administration turned in the worst growth performance since Hoover. In his second term, the economy barely grew at all.

The economic catastrophe continued, of course, into the early months of the Obama administration. Recovery began, according to the NBER, after June 2009; but it proved to be sluggish. As Figure 1 shows, growth during the Obama administration through 2013:Q1 averaged only 2.1%.

This brief narrative directs our attention to several specific factors as potential causes of the D-R gap: fiscal policy, monetary policy, oil shocks, defense spending, productivity performance, and financial shocks.

4.2 Empirical methods

Several of these explanations suggest that the D-R gap arises in part from variables or “shocks” (e.g., oil price shocks, productivity shocks, or defense spending shocks) that we can potentially measure. Let e_t denote one of these shocks, y_t denote the growth rate of real GDP, and suppose the dynamic effect of e_t on y_t is given by a distributed lag so that $y_t = \gamma(L)e_t + \text{other factors}$. Because the value of e_t varies through time, realizations of $\gamma(L)e_t$ under Democrats would likely be different than realizations under Republicans during any specific historical sample. Such differences might explain part of the D-R gap. Specifically, the portion of the D-R gap associated with e_t over any historical sample is the simple difference between the average levels of $\gamma(L)e_t$ under Democrats versus Republicans during that period.

If the e shocks are exogenous non-policy variables (such as oil price shocks), their contribution to the Democratic-Republican difference is just a matter of luck in the sense that it

is unrelated to policy.¹⁸ If, on the other hand, the e shocks are measures of policy (such as fiscal shocks), then they capture an element of differential economic performance that is associated with policy differences between Democrats and Republicans.

The D-R gap attributed to any particular shock over any particular time period depends on both the realizations of the shock over that period, e_t , and on the estimated distributed lag coefficients $\gamma(L)$. If we estimate these coefficients allowing for k different shocks plus other omitted factors that cause average differences in y_t during Democratic and Republican administrations, our basic regression is of the form:

$$y_t = \beta Dem_t + \delta Rep_t + \gamma_1(L)e_{1t} + \gamma_2(L)e_{2t} + \dots + \gamma_k(L)e_{kt} + u_t \quad (1)$$

where Dem_t is an indicator variable for a Democratic president, Rep_t is an indicator for a Republican president, and u_t is a regression error. (Clearly, $Dem_t + Rep_t = 1$ for every t .) We will use estimates of equation (1) to compute the portion of the D-R gaps associated with each shock over any time period for which we have data. We can also compute the joint effects of any subset of shock variables, recognizing that they are not quite orthogonal.¹⁹

5. Explaining the partisan growth gap: Results

Our historical narrative highlighted several candidates for e_t which might usefully be categorized as luck (oil and productivity shocks, defense spending associated with wars), as policy (both fiscal and monetary), or as mixtures of the two (financial disruptions and other factors). We organize our econometric investigation along these lines. We begin by treating each of the various factors in isolation, that is, with versions of (1) that incorporate only one e variable at a time. Later, we present estimates of the effects of each of the various factors using versions of (1) with multiple shocks.

5.1 Luck

We start with the “luck” factors: oil shocks, productivity shocks, defense spending due to wars, and foreign influences.

¹⁸ *Economic* policy, that is. Arguably, oil shocks have something to do with U.S. foreign policy—the two Gulf Wars being prominent examples.

¹⁹ The shock and time-period specific D-R gaps are linear combinations of the γ coefficients. If, say, $\gamma_1(L)$ contains p lags, then the D-R gap for e_1 can be written as $\sum_{i=1}^p \gamma_{1i} (\bar{e}_{1i}^{Dem} - \bar{e}_{1i}^{Rep})$, where $\bar{e}_{1i}^{Dem} = (1/N^{Dem}) \sum_{t=T_1}^{T_2} e_{1,t-i}$ and similarly for \bar{e}_{1i}^{Rep} . The estimated gap is $\sum_{i=1}^p \hat{\gamma}_{1i} (\bar{e}_{1i}^{Dem} - \bar{e}_{1i}^{Rep})$, and the standard error of the estimate is computed from the covariance matrix of the estimates $\hat{\gamma}$ holding the weights $(\bar{e}_{1i}^{Dem} - \bar{e}_{1i}^{Rep})$ fixed.

5.1.1 Oil shocks

Hamilton's (1983) classic paper makes the case that disruptions in the oil market and the associated increases in prices and quantity constraints were important causes of recessions well before OPEC I. Hamilton (2003) measured these disruptions using a nonlinear transformation of oil *prices*, "net oil price increases," which measures the value of the time t oil price relative to its largest value over the preceding 12 quarters:

$$P_t^{Hamilton} = \max\left(0, 100 \times \ln(O_t / O_{t-12:t-1}^{Max})\right).$$

Here O_t denotes the price of oil, measured as the crude petroleum component of the producer price index, and $O_{t-12:t-1}^{Max}$ is the largest value of O_t between $t-12$ and $t-1$. Note that Hamilton's measure captures only oil price *increases*, not *decreases*, so it looks for an asymmetric effect of oil prices on economic activity. By assumption, increases in oil prices effect economic activity—presumably negatively—while decreases do not.

Killian (2008) provides a different measure of oil market disruptions by computing shortfalls in OPEC *production* associated with wars and other "exogenous" events. This variable is arguably a purer "shock" since prices depend on market reactions. But Killian's measure is available only over a relatively short period: 1971:Q1 – 2004:Q3.

The first two lines of Table 6 show results from using these two oil shocks, in turn, as the sole e variable in estimating (1). $P_t^{Hamilton}$ is available over the entire sample period, and it explains 50 basis points of the 180 basis point full-sample D-R gap.²⁰ $Q_t^{Killian}$ explains only 21 basis points of the much smaller 82 basis point D-R gap over its shorter sample period (and is not significant). But notice that the share of the gap explained by oil shocks is similar in the two cases—a bit over a quarter.

The first two lines of Table 7 look into oil prices more deeply by displaying the estimated effects of oil shocks for each presidential term. Using $P_t^{Hamilton}$, there are large negative growth effects in the Nixon-Ford and Carter terms (OPEC I and OPEC II). But the largest estimated negative effect by far comes in G.W. Bush's second term. Oil prices increased three-fold during Bush II-2 and undoubtedly played an important role in the onset of the Great Recession (see Hamilton (2009)). However, most economists believe that financial factors were the major cause

²⁰ We also estimated equation (1) using Hamilton's measure allowing for a break in the oil price coefficients in 1985. The results are similar to the full-sample results reported in Table 6.

of the 2007-2009 recession. We will examine financial factors below. For now, we merely observe that excluding the post-2007 period (not shown in Table 6) reduces the portion of the D-R gap explained by $P_t^{Hamilton}$ from 50 to 34 basis points.

5.1.2 Productivity

Panel E of Table 1 showed that total factor productivity (TFP) grew substantially faster under Democratic presidents but that the difference almost disappears when the TFP data are adjusted for utilization. Remember that both TFP and resource utilization are systematically higher under Democrats, so the adjustment, made by Fernald (2012), is potentially important.

Lines 3-5 of Table 6 shows results that control for productivity shocks in three different ways. The first uses Fernald's quarterly utilization-adjusted TFP growth; it explains 42 basis points of the full-sample 180 basis point D-R gap. Examining the term-by-term detail in Table 7 reveals that much of the explanatory power comes from large positive TFP shocks in the Truman and Kennedy-Johnson administrations plus sizable negative shocks in Reagan's first term, Bush I, and the second term of Bush II. But since adjusting for utilization is always somewhat problematic,²¹ we repeated the exercise using annual data from Basu, Fernald, and Kimball (2006), as updated by Fernald (2013).²² Fortunately, the results, shown in line 4 of Table 6, are almost the same as the quarterly results.²³

These results attribute roughly a quarter of the observed D-R gap to utilization-adjusted TFP shocks, even though Table 1 showed a negligible difference between the average values under Democratic and Republican presidents. The apparent inconsistency is explained by the lagged effects of TFP growth on output. The Table 6 results control for both current *and lagged* TFP growth rates, and some of the latter are inherited from the previous term. For example, using Basu *et al.*'s annual series, the average value of utilization-adjusted TFP growth during the final year of the *preceding* term was 2.7% for Democrats versus only 1.2% for Republicans. Thus, while Democrats inherited weaker GDP growth from the previous administration, as we saw in Figure 2, they also inherited more favorable TFP growth--which the regression uses to explain a portion of the D-R gap.

²¹ Fernald (2012) discusses potential problems with the quarterly adjustments.

²² The annual specification uses y_t measured as the rate of from Q2 of year t to Q2 of year $t+1$ and Fernald's annual utilization-adjusted TFP growth series as e_t . The specification includes the current and one lag of e_t .

²³ These results depend on the number of lags included in (1). Using Fernald's utilization adjusted TFP, the TFP explains 42 basis points of the D-R gap in the 6-lag benchmark specification shown in Table 6. But this estimate falls to 14 basis points in a 4-lag specification and increases to 59 basis points when 8 lags are used.

Finally, line 5 of Table 6 shows results using Gali's (1999) VAR-based measure of long-run shocks to *labor* productivity (not TFP). We computed these shocks using a VAR(6) that included real GDP, payroll employment, inflation (from the GDP deflator), and the 3-month Treasury bill rate. Gali's measure suggests a much smaller, but still highly significant, role for productivity shocks than the Fernald measures do.

5.1.3 Wars

Wars are important, and arguably exogenous, fiscal shocks. Sharp increases in military spending tend to cause growth spurts, while sharp cutbacks in military spending can cause recessions. The U.S. experienced four major wars in the post-WWII period. Could it be that much of the Democratic growth edge comes from the timing of wars? For example, Truman presided over the Korean War boom, and Eisenhower ended it; and Johnson presided over the Vietnam buildup while Nixon, after a long delay, ended it. On the other hand, Reagan initiated a huge military buildup in peacetime, and both Bushes were wartime presidents.

A look at the historical record shows a huge partisan gap in the growth rates of federal defense spending. Real military spending grew, on average, by 5.9% under Democrats but only by 0.8% under Republicans (see Appendix Table A.4). However, on average, federal defense spending accounts for just 8% of GDP over the postwar period. It would be hard for a tail that small to wag such a big dog.

One simple but crude way to take out the effect of wars on the Democratic-Republican difference in economic performance is to eliminate the following presidential terms from the analysis: Truman (1949-53) and Eisenhower 1 (1953-1957) for the Korean War, Johnson (1965-1969) and Nixon (1969-1973) for the Vietnam War, Bush I (1987-1991) for the Gulf War, and the Bush and Obama administrations for the Iraq and Afghanistan Wars. Table 8 shows the results of doing this in various combinations. The largest difference by far is associated with the Korean War. In fact, essentially all of the large D-R difference in the average growth of defense spending is associated with Korea. With the Truman administration eliminated, defense spending increased on average by 1.2% during Democratic administrations compared to 0.8% under Republicans. Eliminating the Truman and first Eisenhower terms from the analysis lowers the Democratic-Republican difference in average GDP growth from 1.80 percentage points to just 1.46 percentage points.

Lines 6 and 7 of Table 6 show results from using more refined defense spending shocks. The first is the defense-related government expenditure shocks identified by Ramey (2011) from the legislative record. These shocks explain 20 basis points of the full-sample D-R gap. Term-by-term results in Table 7 show that Ramey defense spending shocks led to an increase in average GDP growth of 1.1 percent during the Truman administration, but had only small effects in other administrations. We also carried out the analysis using the defense-related government expenditures shocks measured by Fisher and Peters (2010). These shocks are constructed as excess returns for a portfolio of stocks of defense contractors. Because these returns were not unusually large during the Korean War buildup, the Fisher-Peter shocks explain essentially none of D-R gap.

5.1.4 International Growth

Could it be that Democratic presidents were just luckier than Republican presidents in a different sense: that growth in the rest of the world happened to be faster when they were in office, and that this faster growth abroad helped pull the U.S. along? This channel is difficult to measure because it involves finding changes in rest-of-the-world growth that are exogenous to U.S. domestic sources of growth. Line 8 of Table 6 shows the results from one attempt to do so. We measure international shocks by using real GDP growth among the *European* OECD countries, where feedback is eliminated by using the residuals from regressing this growth rate on four of its own lags and the current and four lagged values of the U.S. GDP growth rate. The point estimates suggest that these European growth rate residuals explain roughly 20 basis points of the 133 basis point D-R gap over the period 1962-2012. Eyeballing the term-by-term results in Table 7 suggest that the European growth variable captures some of the same effects as Hamilton's oil price shocks, suggesting the importance of studying these shocks jointly—as we will do later.

5.2 Fiscal and Monetary Policy

5.2.1 Fiscal policy

We have just seen that defense spending shocks explain none of the D-R growth gap since the Korean War buildup. But what about other sorts of fiscal policy shocks or deliberate (systematic) fiscal stabilization policy?

Lines 9 and 10 of Table 6 show results using two different measures of *tax* shocks constructed from the narrative record. The first is from Romer and Romer (2010). The second is

personal and corporate tax shocks from Mertens and Ravn (2013) which build on the Romer and Romer series. The table shows that these shocks explain none of the Democratic-Republican difference. Line 11 shows results for government spending shocks constructed from the fiscal policy VAR model used in Mertens and Ravn (2013). Their VAR includes seven variables: real per capita GDP, government purchases, average personal and corporate tax rates and tax bases, and the level of government debt. Shocks to government spending are identified by putting government purchases first in a Wold causal ordering (motivated by the identification restriction used in Blanchard and Perotti (2002)). Line 11 shows that these identified government spending shocks explain a small portion of the Democratic-Republican difference. We found similar results when we used the Ramey defense shocks discussed earlier as an instrument to identify government spending shocks.²⁴

So far, our analysis of fiscal policy has focused on *shocks* rather than on *systematic* differences between Democrats and Republicans in their policy reactions to the state of the economy. Limited data make it difficult to estimate even relatively simple policy functions, such as those in Auerbach (2012), reliably.²⁵ However, we offer one simple piece of empirical analysis that suggests little difference between Democratic and Republican presidents in their discretionary fiscal reactions to economic activity.

Figure 3 plots the four-quarter change in the structural surplus (as a share of potential GDP), for each quarter of each presidential term starting with the fourth, measured vertically, against the four-quarter change in real GDP (lagged one year), measured horizontally.²⁶ Plus signs (+) in the chart connote observations for Democratic presidents and dots (•) connote observations for Republicans. There are 13 observations per term, but because the structural surplus data begin in 1959, the data only start with the Kennedy-Johnson term. The figure shows regression lines fit

²⁴ We also carried out the analysis using SVAR-based tax shocks estimated by Mertens and Ravn (2013). These SVAR shocks explain nearly half of the Democratic-Republican difference—an astonishingly high share. But examination of the shocks led us to be skeptical. The high explanatory power arises from a SVAR shock that is identified using corporate tax rate shocks from the legislative record. This identified shock explains a large fraction of real GDP growth rates in (2) (the marginal R^2 is 0.40), and it explains much of the decline in real GDP during the recessions of 1957 (Eisenhower-2) and 1974 (Nixon-Ford) despite the absence of any major changes in corporate tax rates preceding these recessions. Thus, we are inclined to discount this estimate as a fluke rather than as a coherent explanation of the Democratic-Republican difference.

²⁵ It is interesting, however, that Auerbach and Gorodnichenko's (2012) analysis suggests stronger effects of fiscal policy during recessions, so that Republicans (who presided over more recessions) had a more powerful fiscal lever than Democrats.

²⁶ We begin with the third quarter of each term because we are using four-quarter lags. The first three quarters thus would straddle presidential terms.

separately to observations corresponding to Democratic and Republican presidents. These lines are like rump fiscal reaction functions for the two parties, and the scatter-plot suggests no fiscal stabilization under Democratic presidents (the slope is 0.02 with standard error 0.08) and a modest amount under Republican presidents (slope = 0.20, s.e. = 0.08). Thus fiscal policy appears to have been somewhat more stabilizing under Republicans.

5.2.2 Monetary policy

U.S. presidents do not control monetary policy, of course. And since the famous Treasury-Fed accord occurred in 1951, pre-Accord data cannot be influencing our calculations much. Yet we know, for example, that Arthur Burns was disposed to assist Richard Nixon's reelection campaign in 1972.²⁷ And we know that President Reagan was eager to get rid of Paul Volcker, who was viewed as insufficiently pliable, in 1987.²⁸ While these are both examples of Republican influence on monetary policy,²⁹ could it be that Democratic presidents have wielded their appointment (or persuasion) powers more skillfully to obtain more growth-oriented Federal Reserve Boards?

The proposition seems implausible, but to test it we label a Fed chairman as a Democrat if he was first appointed by a Democratic president, and as a Republican if he was first appointed by a Republican president. Under this classification, Marriner Eccles, Thomas McCabe, William McChesney Martin, G. William Miller, and Paul Volcker code as Democrats while Arthur Burns, Alan Greenspan, and Ben Bernanke code as Republicans—even though Volcker was probably the most hawkish of the lot and Greenspan and Bernanke were probably the most dovish.

The U.S. economy did grow faster under Democratic Fed chairmen than under Republican chairs. Table 9 shows that average real GDP growth was 4.00% when Democrats led the Fed, but only 2.74% when Republicans did—a notable growth gap of 1.26 percentage points (rightmost column).³⁰ The table also displays average growth rates under all four possible party configurations of president and Fed chair. We see that the economy grew fastest (5.27%) when Democrats held both offices (example: Truman and Martin) and slowest (2.41%) when

²⁷ See, for example, Abrams (2006).

²⁸ See Silber (2012), Chapter 15.

²⁹ Greenspan's tight monetary policies, however, are widely (and probably correctly) blamed for costing George H.W. Bush a second term.

³⁰ Unlike the D-R growth gap for presidents, changes in trend matter for assessing the D-R growth gap for Fed chairmen. Detrending GDP growth rates (using the $\kappa = 67$ trend mentioned earlier) reduces the 1.26 percentage point D-R gap to just 0.43 percentage point.

Republicans held both (example: Bush I and Greenspan). Faster growth under Democratic rather than Republican Fed chairmen is apparent whether the president was a Democrat or a Republican, but the difference is minimal when a Republican occupied the Oval Office and large when a Democrat did.

If Federal Reserve policy fostered faster growth under Democratic presidents, the FOMC was *not* doing it via lower interest rates, as Panel H of Table 1 showed. The average *levels* of both nominal and real interest rates were lower under Democratic presidents, but these differences do not come close to statistical significance. There is, however, a notable tendency for both the nominal and real Federal funds rate to trend *upward* during Democratic presidencies and *downward* during Republican presidencies, suggesting that the Fed normally tightens under Democrats and eases under Republicans.³¹ Of course, such an empirical finding does not imply that the Fed is “playing politics” to favor Republicans. Rather, it is just what you would expect if the economy grows faster (with rising inflation) under Democrats and slower (with falling inflation) under Republicans—as it does.

Figure 4 presents two scatter plots that summarize the correlation between changes in the Federal funds rate and lagged real growth, in much the same way as Figure 3 did for fiscal policy. Specifically, each point plots the four-quarter change in the Federal funds rate vertically and the four-quarter change in the logarithm of real GDP (lagged one year) horizontally for each quarter (so there are 13 points for each term). Democratic terms are again plotted as plus signs and Republican terms are plotted as dots. An upward slope connotes a stabilizing monetary policy: raising interest rates when the economy grows faster.

Panel A plots the change in *nominal* interest rates, and Panel B uses *real* interest rates (computed as $r_t = R_t - 100 \times \ln(P_t/P_{t-4})$, where R_t is the nominal rate and P_t is the PCE price deflator). With real rates, arguably the superior measure, the scatterplot shows a slight positive slope under Democratic presidencies (0.13, s.e. = 0.10) and essentially no slope under Republicans (0.04, se = 0.10), so there is little monetary stabilization under either party. That the Democratic line is a bit higher indicates that monetary policy was, on average, slightly tighter when the president was a Democrat.

³¹ For these simple calculations, we use *ex post* rather than *ex ante* real rates, with inflation measured over the current and three preceding quarters.

By contrast, nominal rates show a distinctly positive (thus, stabilizing) slope under Republicans (0.40, with s.e.=0.12) but much less under Democrats (0.12, with s.e.=0.08). And, as noted earlier, there is a strong case to be made that nominal interest rates rose, on average, under Democrats but fell under Republicans. Thus, if there was any partisan advantage stemming from monetary policy, it would seem to have favored Republican presidents.

Lines 12-14 of Table 6 consider the effects of controlling for monetary policy shocks in the same regression framework we have used to control for other shocks. Line 12 uses shocks identified from the narrative record by Romer and Romer (2004); these are available for only a small portion of the sample: 1970-1996. The other two monetary policy shocks are computed from SVAR models. The first are the interest rate shocks identified by Sims and Zha (2006) in their Markov-switching SVAR (available from 1961-2003), and the second uses a standard Cholesky identification with the Federal funds ordered last in a VAR that also includes real GDP, inflation, and commodity prices. (The sample period is truncated at 2008:Q4 to avoid potential nonlinearities associated with the zero-lower bound for the funds rate.) If anything, controlling for monetary policy shocks pushes in the “wrong” direction, suggesting a policy-induced growth advantage for Republican presidents—just as suggested by Figure 4

5.3 Other Factors

5.3.1 Financial sector disruptions

Financial market disruptions are difficult to measure and doubtless contain important endogenous components, which might even be related to policy. We measure such shocks in two distinct ways.

The first uses various interest rate spreads. We consider three. The first is the Baa-Aaa bond yield spread, a risk spread on long-term bonds; it is available over the entire postwar sample period. The second is the “excess bond premium,” constructed by Gilchrist and Zakrajšek (2012), which measures the spread of corporate over riskless bonds, after controlling for the normal effect of the business cycle.³² As discussed in Gilchrist and Zakrajšek (2012) and in Gilchrist, Yankov, and Zakrajšek (2009), the GZ spread is designed to be an indicator of credit market conditions such as the price of bearing risk. It is available from 1973. The final spread is

³² The GZ spread also controls for maturity, callability, and default risk.

the Eurodollar-Treasury bill spread (the “Ted” spread), which is a common indicator of liquidity problems, available from 1971.³³

The second method of assessing financial stress uses the Federal Reserve’s Senior Loan Officers Opinion Survey (FRB SLOOS), which provides a direct, albeit subjective, measure of credit market tightening or loosening. We use a version of the FRB SLOOS that is available from 1970.

We computed shocks to each of these four financial variables as residuals from a regression that included four lags of the financial variable and current and four lags of GDP growth rates. Thus, in SVAR parlance, the financial shock is identified using a Wold causal ordering with the financial variable ordered after GDP.

Lines 15-18 of Table 6 show the results when these variables are analyzed one at a time. The estimated effects on the D-R gap differ markedly across the variables, although the standard errors are relatively large. The two risk spreads (Baa-Aaa and the GZ spread) explain 21 or 33 basis points of the D-R gap, the Ted spread explains essentially none of the gap, and the SLOOS makes the average growth rate under Democrats 24 basis points *lower*.

The term-by-term results in Table 7 tell an interesting story. The estimates suggest that the financial turbulence captured by the Ted spread and the SLOOS had a substantial negative effect on average growth during the second Bush II administration—the time of the financial crisis. However, these two variables show even larger negative effects on average growth in the Carter administration, presumably due to the financial market disruptions associated with credit controls. They differ greatly during the Reagan presidency, when senior loan officers reported much easier credit conditions but the Ted spread was essentially neutral. The Baa-Aaa spread shows its two most negative impacts during the Reagan-1 and Bush II-2 terms. The GZ spread differs markedly from the other financial indicators. Amazingly, it estimates roughly an average impact on GDP growth for the Bush II-2 term, much more negative impacts during the Reagan years, and a higher than average growth effect during Carter’s term. Clearly, this spread is capturing phenomena different than the financial turmoil in the Carter and Bush II terms.

³³ Since 1986, the Ted spread has been conventionally defined as the spread between LIBOR and T-bills. We use the original meaning to create a consistent series dating back to 1971.

5.3.2 Confidence, Expectations, and Uncertainty

“Confidence,” be it consumer confidence or business confidence, is a slippery concept—and would not normally be thought of as an instrument of economic policy. But the observed faster GDP growth under Democrats could have elements of a self-fulfilling prophecy if the election of a Democratic president boosts confidence (because people *believe* Democrats will produce faster income growth) and that, in turn, boosts spending.

Two facts seem to point in this direction. First, Appendix Table A.4 showed that two of the major spending components where the Democratic growth edge is most pronounced are consumer durables and business investment, each of which is presumably sensitive to confidence. Second, the most extreme partisan gap in growth performance occurs in the first year of a newly-elected Democratic president (see Figure 2). While each of these facts is suggestive, can we find more direct evidence that confidence drives partisan differences?

Since February 1979, the Gallup Poll has been asking Americans, “In general, are you satisfied or dissatisfied with the way things are going in the United States at this time?”³⁴ Looking at how the balance of “satisfied” versus “dissatisfied” Americans changed during presidential transition periods shows only small impacts of presidential elections, and a negligible difference between the two parties.³⁵

Business confidence is even harder to measure. The longest consistent time series seems to be the National Federation of Independent Business’s (NFIB) Small Business Optimism Index, which dates back to 1975. Those data enable us to consider five presidential transitions from one party to the other, each running from the fourth quarter of the election year to the first quarter of the following year. Three of these transitions are Republican-to-Democrat (Ford to Carter, Bush I to Clinton, and Bush II to Obama), and the average change in the NFIB index during them was just +0.2 points. (This includes the Bush II to Obama transition, during which the economy was collapsing.) The other two are Democrat-to-Republican transitions (Carter to Reagan, and Clinton to Bush II), where the change in the NFIB index averages -2.0 points. Surprisingly, this very pro-Republican portion of the population (proprietors of small businesses) has been a bit more optimistic about incoming Democrats. But the differences are small.

³⁴ This question preceded the now-famous “right-track/wrong track” question, which has a much shorter history.

³⁵ Since the precise calendar dates of the survey change over time, we could not always “bracket” the election-to-inauguration period. Furthermore, the available data cover only four transitions: Carter to Reagan, Bush I to Clinton, Clinton to Bush II, and Bush II to Obama.

The performance of the stock market between Election Day and Inauguration Day might be taken, in part, as a statement of investor confidence—or lack thereof—in the incoming administration. It gives a slight edge to incoming Republicans,³⁶ despite the fact—displayed in Panel D of Table 1—that stock prices actually rise much faster under Democratic presidents than under Republican presidents. Specifically, the S&P 500 gained a minuscule 0.15%, on average, during the four Democrat-to-Republican transitions, but lost an average of 1.38% during the four Republican-to-Democrat transitions. However, more than 100 percent of the average Democratic transition loss came because stock prices were crashing during the Obama transition. Since the economy was collapsing at the time, it is hard to attribute this drop to lack of confidence in Barack Obama.

The University of Michigan’s Index of Consumer Sentiment (ICS) has been collected on a consistent basis since 1960. Barsky and Sims (2012) note that the ICS is based in part on answers to questions focused on evaluating the *current* (or recent past) economic situation and in part on answers to questions focused on expectations of *future* conditions. The ICS can be decomposed into an index associated with current conditions (the ICC) and another associated with expectations of future conditions (the ICE). We construct “shocks” to each of these two indices by using the same procedure as for the financial variables, that is, by ordering it last in a bivariate SVAR(4) that also includes GDP growth rates.

Results from assessing the impacts of these confidence shocks in equation (1) are shown in lines 19 and 20 of Table 6. Evidently, controlling for the current-conditions component of the Index of Consumer Sentiment has no effect on the D-R gap. In contrast, shocks to consumer expectations, thus measured, explain 33 basis points of the 126 basis point D-R gap over the shorter 1962-2013 period, a notable and highly significant amount.³⁷ The term-by-term results shown in Table 7 show a pattern for the effects of consumer expectations that is somewhat similar to the pattern for oil prices and international shocks, suggesting once again the need for multi-variable analysis.³⁸

³⁶ We measure the closing price of the S&P 500 from the day before Election Day (always a Monday) until Inauguration Day (January 20). In one case, Inauguration Day fell on a Saturday; in that case, we used January 19.

³⁷ We find similar results using the 5-year-ahead and 12-month-ahead expectations component of the ICE.

³⁸ We have also investigated the effects of future (“news”) productivity shocks using the identification scheme of Barsky and Sims (2011). Using their data and sample period (1960-2007), “news” and “surprise” components of TFP explain none of the D-R gap (indeed, the gap is larger after controlling for these shocks).

Uncertainty is sometimes viewed as indicating a lack of confidence. Line 21 of Table 6 shows results using shocks to the historical news-based index of policy uncertainty developed by Baker, Bloom, and Davis (2013), where the shocks are again computed using a bivariate SVAR(4). Uncertainty shocks, measured this way, appear have favored Republicans by 18 basis points. Table 7 shows that Eisenhower’s two terms were the biggest “winners” (low uncertainty) while Obama’s was the biggest “loser” (high uncertainty).

5.4 The joint effects of multiple shocks

Of course, the shocks we have considered are not mutually exclusive. For example, Table 7 reveals that the high GDP growth during Truman’s elected term (the highest in our sample) reflected positive productivity shocks, an extraordinary defense buildup, better-than-average oil-price performance, and low uncertainty. Growth during Bush II’s second term (the lowest in the sample) was plagued by a huge oil shock, poor TFP performance, slow economic growth in Europe, severe financial disruption, and—unsurprisingly—low expectations. Furthermore, the different shocks are not quite orthogonal.³⁹ So the *joint* effects of various shocks in combination cannot be determined by adding up the univariate estimates presented so far.

Table 10 summarizes the effects of various shocks from several versions of equation (1). Out of thousands of possible combinations, we limit ourselves to 28. Each line in the table represents a different regression of the form (1), and each includes both oil shocks and productivity shocks because these are our two strongest and most robust explanatory variables. Most of the regressions also include one or two additional variables—e.g., the Ramey defense-spending shocks or the international growth shocks—and a few in Panels B and C include as many as four more.

Table 10 comes in three parts. Panel A shows estimated effects computed over different sample periods: in each case, the longest sample the available data permit. (Thus the 19 lines are not comparable.) We begin each line by displaying the sample period and the estimated D-R gap over that sample; notice that these gaps range from a high of 213 basis points (line 3) to a low of 66 basis points (line 15). Then we show the portion of the gap explained by the regression, which ranges from 102 basis points (line 1) to *minus* 21 basis points (line 10). The next two columns show the estimated impacts of Hamilton’s oil prices and Fernald’s TFP shocks on the D-R gap.

³⁹ If you exclude multiple measures of the same shock (e.g., monetary policy or financial disruptions), the various righthand variables come close to being orthogonal. Very few correlations are as large as 0.3 in absolute value. See Table A.6 in the appendix.

And the final two columns show the name and estimated effect of some third variable. There are 18 different choices.

Over the longest sample (line 1), we succeed in explaining 102 basis points out of the total 187 basis point D-R gap, or 55 percent--with oil prices explaining 49 basis points, TFP explaining 31 basis points, and defense spending explaining the remaining 22 basis points.⁴⁰ For oil prices and defense spending, these estimated contributions closely match the univariate estimates in Table 6. But the contribution of TFP shocks drops from 42 basis points in the univariate case (Table 6, line 3) to 31 basis points when the other variables are included (Table 10A, line 1).

Line 2 uses the same three explanatory variables, but begins the sample in 1953:Q2 so as to exclude the Truman-2 term and the Korean War. The D-R gap falls to 150 basis, of which 64 basis points (or 43%) is explained by the three shocks. The largest decline in explanatory power is, naturally, for defense spending, which no longer matters. This finding is, of course, consistent with the univariate analysis of Table 6: The defense spending effect is concentrated in the Korean War. Line 3 shows that the explanatory power of defense spending is negligible with the Fisher-Peters measure; as mentioned above, this measure does not show large excess returns for defense contractors associated with the Korean War buildup. Hereafter, we will omit defense spending shocks when working with sample periods that do not include the Korean War years.

Line 4 reports the first such example: a specification that replaces Hamilton's oil *price* shock with Killian's oil *quantity* shock. The latter is only available from 1972:Q3 to 2004:Q3, and over this short sample, it explains 26 basis points of the 82 basis point D-R gap (and TFP shocks actually favor Republicans). Line 4 illustrates how sensitive the estimates are to the sample period.

Line 5 replaces Fernald's TFP shocks by Gali's labor productivity shocks, which explain a comparable share of the D-R growth gap.

Beginning with line 6, we are always *adding* an additional explanatory variable to the oil price and TFP shocks, starting with the international growth shock. Again, the estimation period must change line by line. However, consistent with the results in Table 7, these international

⁴⁰ The raw D-R gap is 187 basis points in this regression, rather than the 180 basis points that we have been emphasizing, because including the Ramey defense shocks forces us to drop the last two quarters.

shocks are modestly (and negatively) correlated with oil-price shocks, so the estimates underlying this line transfer some of the oil effect to international shocks.

Taken together, the results so far suggest that somewhat over half of the full-sample D-R gap of 1.80 percentage points can be explained by such “luck” variables.⁴¹ Roughly 20 basis points can be explained by the defense buildup associated with the Korean War, some 25-30 basis points by TFP (which boosted growth during the Truman and Kennedy and Kennedy-Johnson administrations and retarded growth during Reagan-1), and 40 to 50 basis points from a combination of oil and other internationally-based shocks.

What about monetary and fiscal policy? Lines 7-12 introduce, respectively, two different measures of tax shocks, VAR-based government spending shocks, and three different versions of monetary policy shocks as additional variables. Consistent with the univariate findings in Table 6, none of them contribute much to explaining the D-R gap (the Sims-Zha shocks do best), and monetary policy goes the “wrong” way in two of the three cases.

Lines 13-16 try our four measures of financial disruption as additional variables, one at a time. The sample periods vary, but only the Gilchrist- Zakrajšek “excess bond premium” seems to matter. The regression underlying line 15 is estimated over a much shorter time period (1975:Q3 to 2012:Q4), but for what it is worth has high explanatory power. Oil price shocks, TFP shocks, and the excess bond premium jointly explain 48 basis points of the 66 basis point D-R gap over this short period, or 73%. Note, however, that the 66 basis point gap in line 15 is atypical; it’s the smallest in Table 10. Our reading of the results in lines 13-16 is that they are consistent with the popular wisdom that much of the low average growth in the Bush II-2 term was associated with the 2008 financial collapse. However, Democrats also suffered from periods of financial turmoil (sometimes self-induced, as with the Carter credit controls), and on net financial market factors explain little of the full-sample D-R gap.

Lines 17-19 experiment with consumer confidence (ICC), consumer expectations (ICE), and uncertainty.⁴² In the case of the ICE over the period 1962:Q3 to 2013:Q1, the large univariate

⁴¹ While we refer to these variables as “luck,” each may be affected by policy. For example, while the timing of the oil price shocks of the 1970s and early 1980s were largely a matter of luck, the oil price shocks associated with the Gulf War and Iraq War were caused by policy decisions; defense spending is a policy decision; and, while utilization-adjusted TFP shocks are a bit of black box, government decisions can presumably influence productivity in a variety of ways.

⁴² Just as in the univariate results, the uncertainty variable points out an area of Republican growth advantage.

contribution of 33 basis points found in Table 6 (line 20) is whittled down to 19 basis points when TFP and oil prices are included (Table 10A, line 18). But it is still significant.

To summarize, as a broad generalization, Table 10A shows that *most* of the univariate findings from Table 6 are reasonably robust to the inclusion or exclusion of other explanatory variables, but that many are *not* robust to changing the estimation period. Defense spending is important only if the Korean War is included. TFP shocks clearly matter, accounting for something around 30 basis points of the D-R gap in the full sample. Oil shocks certainly matter, but their impact is difficult to determine because oil shocks can be measured by price or quantity (albeit over a smaller sample), and the estimated effects depend on what else is in the regression (e.g., whether or not international growth is included). The Michigan Index of Consumer Expectations may account for up to 20 basis points of the partisan growth gap, but it is a bit hard to sort out from international growth. Over the full sample, about the best we can do is explain about 100 basis points of the 180 basis point D-R gap.⁴³

Panel B of Table 10 zeroes in on the longest sample over which multiple shock variables are available: 1949:Q4 through 2012:Q3. Over this particular sample, the estimated D-R gap is 1.92 percentage points, and the highest explanatory power (99 basis points) is found in line 1 (oil, TFP, and defense), which nearly matches line 1 of Panel A.

Panel C investigates a few other potentially important variables which are available only over a much shorter time period beginning in 1962:Q4. Line 1 duplicates line 6 of Panel A. Lines 2-5 show that our basic findings for oil prices, TFP, and European growth are robust to the inclusion or exclusion of the Baa-Aaa interest rate spread, ICE, and the news-based measure of uncertainty. Among these last three shocks, only ICE helps to explain the D-R gap. Line 3 manages to explain 63 basis points out of the total 133 basis point gap, or 47%.

6. Does a partisan growth gap show up in other countries?

Finally, we ask whether other Western-style democracies display comparable growth differences when governed by left-leaning versus right-leaning political parties. To provide useful comparisons to the United States, the country must (a) have a stable two-party system

⁴³ We have also investigated the source of the D-R gap using three estimated DSGE models: the well known Smets-Wouters (2007) model, the model of Leeper, Plante, and Traum (2010) that has a relatively rich fiscal sector, and the model of Schmitt-Grohé and Uribe (2012) which features a prominent role for “news” shocks. Each of these models suggested that productivity shocks provided part of the explanation, but otherwise produced estimates that were not easy to interpret. Details are provided in Appendix D.

(that eliminated Italy); (b) change the president's or prime minister's party often enough to permit statistical analysis (that eliminated Japan); and (c) offer a reasonably long time series on real GDP (that eliminated many countries). We also wanted to stick with large countries (that eliminated The Netherlands and many others). In the end, we studied partisan differences in four other countries: the United Kingdom, Canada, France, and Germany. Results are summarized in Table 11.

6.1 The United Kingdom

We were able to trace quarterly real GDP in the UK back to 1955:Q1. Over that period, the British parliamentary system has been dominated by either the Labor or the Conservative (“Tory”) party, although there have been occasional coalition governments. “Labor” and “Conservative” in the UK map very roughly into “Democratic” and “Republican” in the US, although the ideological differences between the two British parties are historically greater than between the two American parties, and the entire political spectrum is shifted notably to the left in the UK.

Of the 229 available quarters, Labor ruled in 95, over which the average GDP growth rate was 2.47%.⁴⁴ Conservative governments ruled in 134 quarters, over which the average growth rate was 2.67%. Thus the partisan growth gap in the UK goes in the opposite direction from that in the US, but is tiny (20 basis points) and comes nowhere close to statistical significance.

6.2 Canada

Canada is like the US in many respects, and has long-lived Liberal and Conservative parties like the UK, though Canada's are probably less ideological. Canadian quarterly GDP data go back only to 1961. Thus we have 205 quarters to work with, of which 135 were under Labor governments and 70 were under Conservative governments. A partisan growth gap similar to that in the United States emerges in Canada: Growth averaged 3.89% under Labor but only 2.48% under the Conservatives.

Canadian economic performance tends to be dominated by that of its giant neighbor to the south. On a quarterly basis, the correlation between Canadian and US GDP growth rates is 0.49, which is quite high for such noisy data. Indeed, empirical macroeconomic studies of Canada

⁴⁴ In parliamentary systems such as the UK's, elections come at various times. We “rounded” the election quarter according to which party ruled for the majority of that quarter. Then we counted the newly-elected party as responsible for the economy beginning in the *next* quarter. Example: The Blair (Labor) government began on May 2, 1997. We counted 1997:2 as having a Conservative prime minister, and started counting 1997:3 as under Labor.

often find US variables to be as important or more important as independent variables than Canadian variables.⁴⁵

So we also compared Canadian growth rates when the *US president* was a Democrat versus a Republican. The results were striking. Canadian growth averaged 4.30% when the US had a Democratic president but only 2.67% when the US had a Republican president. That cross-national partisan gap of 1.63 percentage points is actually a bit larger than the purely Canadian gap (1.41 percentage points) and almost as large as the US gap (1.80 points).⁴⁶ This result could be because US booms and busts cause Canadian booms and busts, or it could be because Canada generally had Liberal prime ministers when the US had Democratic presidents and had Conservative prime ministers when the US had Republican presidents. The former seems more important than the latter. Both countries were led either by the more liberal or by the more conservative party 57% of the time, and by parties of different ideological stripes 43% of the time. The 57-43 split, while significantly different from 50-50 with 205 observations, is substantively close to 50-50. Canada seems more tightly linked to the US economically than politically.

6.3 France

France is trickier because the names of the left-leaning and right-leaning parties change over time. But they can readily be identified as either labor/socialist or republican/Gaullist. Quarterly GDP data allow us to trace French economic history all the way back to 1949. Of those 253 quarters, France had a “labor” government in 96,⁴⁷ with an average real GDP growth rate of 3.19%. Of the 157 quarters with a “republican” government, the growth rate averaged 3.42%. Thus, on this dimension, France resembles the UK, not the US or Canada. The right does very slightly (and insignificantly) better.

6.4 Germany

Germany, meaning *West* Germany before 1991, has had a stable two-party system at least since 1949. The Christian Democratic Union (CDU) is the center-right party, and the Social Democratic Party (SPD in German) is the center-left party. The bigger challenge in Germany is obtaining a long time series on quarterly GDP that covers *all* of Germany, including the former

⁴⁵ For a recent discussion, see Bank of Canada (2013).

⁴⁶ But note that the time periods do not match.

⁴⁷ In two instances between 1981 and 1995, there was “cohabitation.” We code these as “labor.” In addition, there were two very brief periods (between DeGaulle and Pompidou, and between Pompidou and Giscard) in which the technocrat Alain Poher served as interim president. We code those two quarters as Gaullist.

East Germany. The furthest we can go back is to 1970, so we have only 169 quarters to work with. Of these, 89 quarters were under a CDU chancellor and 80 were under an SPD chancellor. Partitioning the growth data along these partisan lines, we find no CDU-SPD difference at all. Rounded to the first decimal place, Germany's annualized growth rate was 2.2% regardless of which party was dominant.

To summarize, in terms of growth differences by political party, Canada closely resembles the United States—but this may be, in part, because the giant American economy pushes the much smaller Canadian economy around. The UK, France, and Germany do not exhibit partisan differences in growth rates. While further study is surely merited, the stark left-right gap in economic performance may be largely a U.S. phenomenon.

7. Conclusions

While economists, political scientists, and even lay people have known for decades that macroeconomic variables like GDP growth and inflation influence elections, this paper makes a landing on a previously-dark intellectual continent: How, if at all, do election outcomes influence subsequent economic performance. What have we learned from this exploration?

There is a systematic and large gap between the US economy's macroeconomic performance when a Democrat is President of the United States versus when a Republican is. While other macroeconomic indicators largely agree, we have concentrated on real GDP growth over the full sample, which is 1.8 percentage points higher under Democrats--a stunningly large partisan gap relative to the sample mean of 3.3 percent. The growth advantage is correlated with Democratic control of the White House, not with Democratic control of Congress. A similar partisan growth gap appears in Canada, but not in the UK, France, or Germany.

On the spending side, much of the D-R growth gap in the United States comes from business fixed investment and spending on consumer durables. And it comes mostly in the first year of a presidential term. Yet faster growth under Democrats is not forecastable by standard techniques, which means it cannot be attributed to superior initial conditions. Nor does it stem from different trend rates of growth at different times, nor to any (measurable) boost to confidence from electing a Democratic president.

Democrats would no doubt like to attribute the large D-R growth gap to macroeconomic policy choices, but the data do not support such a claim. If anything, and we would not make too

much of small differences, both fiscal and monetary policy actions seem to be a bit more stabilizing when a Republican is president—even though Federal Reserve chairmen appointed by Democrats preside over faster growth than Federal Reserve chairmen appointed by Republicans by a wide margin.

It seems we must look instead to several variables that are mostly “good luck,” with perhaps a touch of “good policy.” Specifically, Democratic presidents have experienced, on average, better oil shocks than Republicans (some of which may have been induced by foreign policy), a better legacy of productivity shocks, more favorable international conditions, and perhaps more optimistic consumer expectations (as measured by the Michigan ICE).

These factors together explain slightly more than half of the 1.80 percentage point D-R growth gap. The rest remains, for now, a mystery of the still mostly-unexplored continent. The word “research,” taken literally, means *search again*. We invite other researchers to do so.

References

- Abrams, Burton (2006), "How Richard Nixon Pressured Arthur Burns: Evidence from the Nixon Tapes," *Journal of Economic Perspectives*, Vol. 20 (No. 4), pp. 177-188.
- Alesina, Alberto and Nouriel Roubini (1997), *Political Business Cycles and the Macroeconomy*, MIT Press, Cambridge.
- Alesina, Alberto and Jeffrey Sachs (1988), "Political Parties and the Business Cycle in the United States, 1948-1984," *Journal of Money, Credit, and Banking*, Vol. 20 (No. 1), pp. 63-82.
- Allvine, Fred C. and Daniel E. O'Neill (1980), "Stock Market Returns and the Presidential Election Cycle." *Financial Analysts Journal*, Vol. 36 (No. 5), 49-56.
- Auerbach, Alan J. (2012), "The Fall and Rise of Keynesian Fiscal Policy," manuscript, UC Berkeley.
- Auerbach, Alan J. and Yuriy Gorodnichenko (2012), "Measuring the Output Responses to Fiscal Policy," *American Economic Journal: Economic Policy*, 4 (1), 1-27.
- Baker, Scott R., Nicholas Bloom, and Steven J. Davis (2013), "Measuring Economic Policy Uncertainty," manuscript, University of Chicago.
- Balke, Nathan S. and Robert J. Gordon (1989), "The Estimation of Prewar GNP: Methodology and New Evidence," *Journal of Political Economy*, 97 (1), 38-92.
- Bank of Canada Review*, Summer 2013.
- Bartels, Larry M. (2008), *Unequal Democracy: The Political Economy of the New Gilded Age*. New York: Russell Sage Foundation, and Princeton, NJ: Princeton University Press.
- Barsky, Robert and Eric R. Sims (2011), "New Shocks and Business Cycles," *Journal of Monetary Economics*, 58(3), 273-289.
- Barsky, Robert and Eric R. Sims (2012), "Information, Animal Spirits, and the Meaning of Innovations in Consumer Confidence," *American Economic Review*, 102(4), 1343-1377.
- Basu, Susanto, John Fernald, and Miles Kimball (2006). "Are Technology Improvements Contractionary?" *American Economic Review* 96 (5): 1418-1448.
- Blanchard, Olivier J. and Roberto Perotti (2002), "An Empirical Characterization of the Dynamic Effects of Changes in Government Spending and Taxes on Output," *Quarterly Journal of Economics*, Vol. 117, No. 4, 1329-1368.

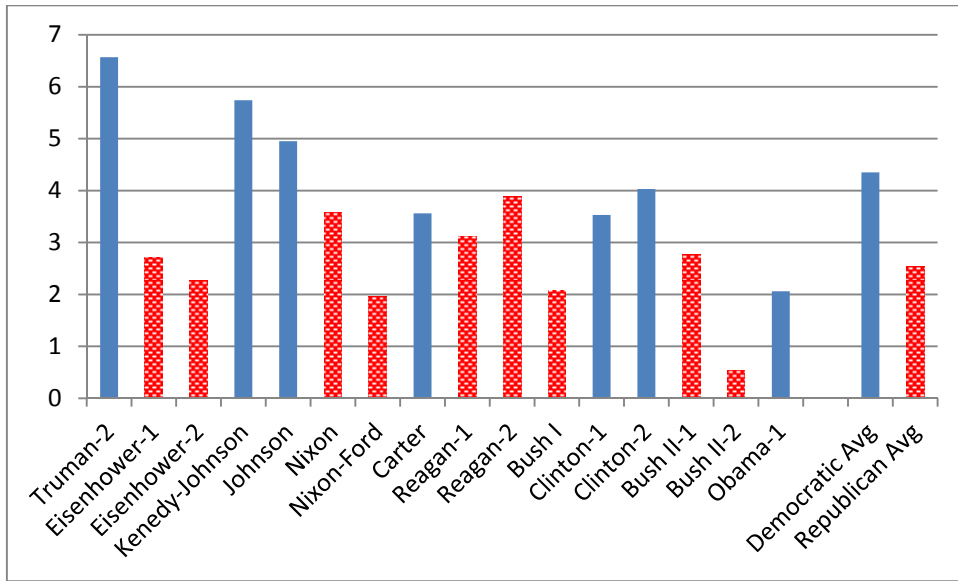
- Comiskey, Michael and Lawrence C. Marsh (2012), "Presidents, Parties, and the Business Cycle, 1949-2009," *Presidential Studies Quarterly*, Vol. 42 (No.1), pp. 40-59.
- Fair, Ray C. (1978), "The Effect of Economic Events on Votes for President," *Review of Economics and Statistics*, Vol. 60, 159-173.
- Fair, Ray C. (2011), *Predicting Presidential Elections and Other Things*, Second Edition. Stanford, CA: Stanford University Press.
- Faust, John and John Irons (1999), "Money, Politics and the Post-War Business Cycle," *Journal of Monetary Economics*, Vol. 43, 61-89.
- Fernald, John (2012), "A Quarterly, Utilization-Adjusted Series on Total Factor Productivity," manuscript, Federal Reserve Bank of San Francisco.
- Fernald, John (2013), "A Quarterly, Utilization-Adjusted Series on Total Factor Productivity, Supplement," Federal Reserve Bank of San Francisco.
- Fisher, Jonas D.M. and Ryan Peters (2010), "Using Stock Returns to Identify Government Spending Shocks," *The Economic Journal* 120, 414-436.
- Galí, Jordi (1999), "Technology, Employment, and the Business Cycle: Do Technology Shocks Explain Aggregate Fluctuations?," *American Economic Review* 89, 249-271.
- Gilchrist, Simon and Egon Zakrajšek (2012), "Credit Spreads and Business Cycle Fluctuations," *American Economic Review*, Vol. 102 (No. 4), 1692-1720.
- Gilchrist, Simon, V. Yankov, and Egon Zakrajšek (2009), "Credit Market Shocks and Economic Fluctuations: Evidence from Corporate Bond and Stock Markets," *Journal of Monetary Economics* 56, 471-493.
- Hamilton, James D. (1983), "Oil and the Macroeconomy since World War II," *Journal of Political Economy*, 91: 228-248.
- Hamilton, James D. (2003), "What is an Oil Shock?" *Journal of Econometrics* 113: 363-398.
- Hamilton, James D. (2009), "Causes and Consequences of the Oil Shock of 2007-08," *Brookings Papers on Economic Activity*, Spring 2009, 215-283.
- Hibbs, Douglas A., Jr. (1977), "Political Parties and Macroeconomic Policy," *American Political Science Review*, Vol. 71 (no. 4), pp. 1467-1487.
- Ibragimov, Rustam and Ulrich Müller (2010), "*t*-Statistic Based Correlation and Heterogeneity Robust Inference," *Journal of Business and Economic Statistics*, Vol. 28, No. 4, 453-468.

- Ibragimov, Rustam and Ulrich Müller (2011), “Inference with Few Heterogenous Clusters,” manuscript, Princeton University.
- Kilian, Lutz (2008), “Exogenous Oil Supply Shocks: How Big Are They and How Much Do They Matter for the U.S. Economy?” *Review of Economics and Statistics* 90, no. 2: 216-240.
- Kim, Chang-Jin and Charles R. Nelson (1999), “Friedman’s Plucking Model of Business Fluctuations: Tests and Estimates of Permanent Transitory Components,” *Journal of Money, Credit, and Banking*, 31:3, 317-334.
- King, Gary and Lyn Ragsdale (1988), *The Elusive Executive*. Washington, D.C.: CQ Press.
- King, Robert G. and Mark W. Watson (2012), “Inflation and Unit Labor Costs,” *Journal of Money Credit and Banking*, Vol. 44, 111-149.
- Leeper, Eric. M., Michael Plante, and Nora Traum (2010), “Dynamics of Fiscal Financing in the United States,” *Journal of Econometrics*, 156(2), 304-321.
- Mertens, Karel and Morten O. Ravn (2013), “The Dynamic Effects of Personal and Corporate Income Tax Changes in the United States,” *American Economic Review*, Vol. 103 (No. 4), 1212-1247.
- Morely, James and Jeremy Piger (2012), “The Asymmetric Business Cycle,” *The Review of Economics and Statistics*, 94(1), 208-221.
- Owyang, Michael T., Valerie A. Ramey, and Sarah Zubairy (2013), “Are Government Spending Multipliers Greater During Periods of Slack? Evidence from the 20th Century Historical Data,” *American Economic Review Papers and Proceeding*, Vol. 103, No: 3, 129-134.
- Ramey, Valerie A. (2011), “Identifying Government Spending Shocks: It’s All in the Timing,” *Quarterly Journal of Economics*, 126(1): 1-50.
- Romer, Christina D. and David H. Romer (2000), “Federal Reserve Information and the Behavior of Interest Rates,” *American Economic Review*, Vol. 90, No. 3, 429-457.
- Romer, Christina D. and David H. Romer (2004), “A New Measure of Monetary Shocks: Derivation and Implications,” *American Economic Review* 94, 1055-1084.
- Romer, Christina D. and David H. Romer (2010), “The Macroeconomic Effects of Tax Changes: Estimates Based on a New Measure of Fiscal Shocks,” *American Economic Review* 100, 763-801.

- Santa-Clara, Pedro and Rossen Valkanov (2003), "The Presidential Puzzle: Political Cycles and the Stock Market," *Journal of Finance*, Vol. 58, No. 5, 1841-1872.
- Schmitt-Grohé, Stephanie and Martín Uribe (2012), "What's News in Business Cycles," *Econometrica*, Vol. 80, No. 6, 2733-2764.
- Silber, William L (2012), *Volcker: The Triumph of Persistence*, Bloomsbury Press.
- Sims, Christopher A. and Tao Zha (2006), "Were There Regime Switches in U.S. Monetary Policy?" *American Economic Review*, 96:1, 54-81.
- Smets, Frank and Raph Wouters (2007), "Shocks and Frictions in U.S. Business Cycles: A Bayesian DSGE Approach," *American Economic Review*, 97:3, 586-606.
- Staiger, Douglas, James H. Stock, and Mark W. Watson (2001), "Prices, Wages and the U.S. NAIRU in the 1990s" in *The Roaring 90s: Can Full Employment Be Sustained*, edited by Alan B. Krueger and Robert Solow, New York: Russell Sage and Century Fund.
- Stock, James H. and Mark W. Watson (2012), "Disentangling the Channels of the 2007-2009 Recession," *Brookings Papers on Economic Activity*, Spring 2012, 81-135.

Figure 1

A. Average annualized GDP growth, by term



B. Average annualized GDP growth, by presidency

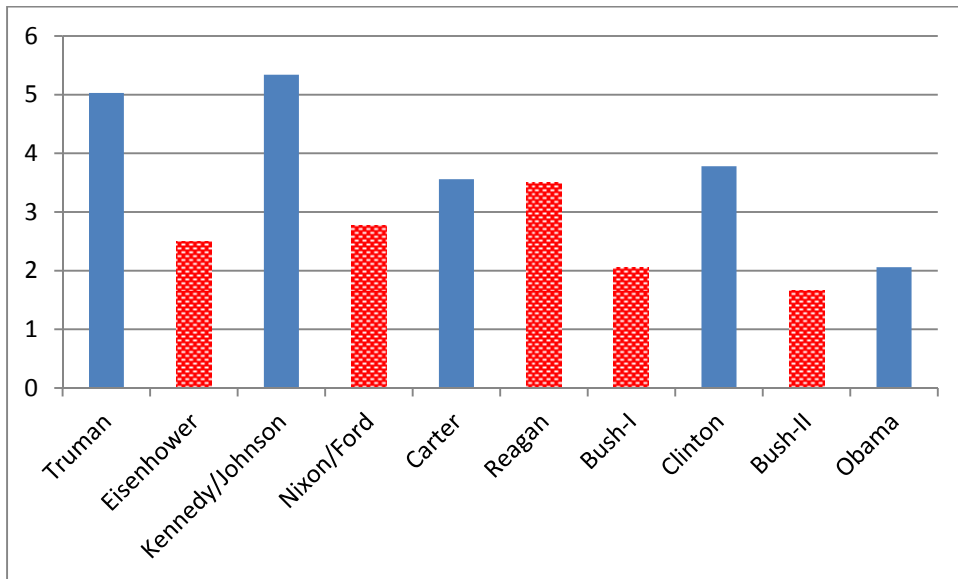
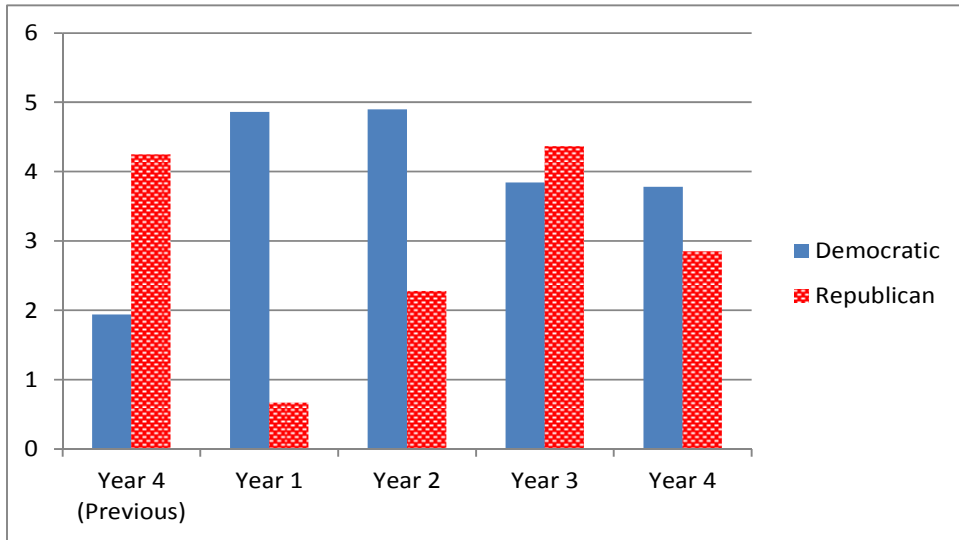
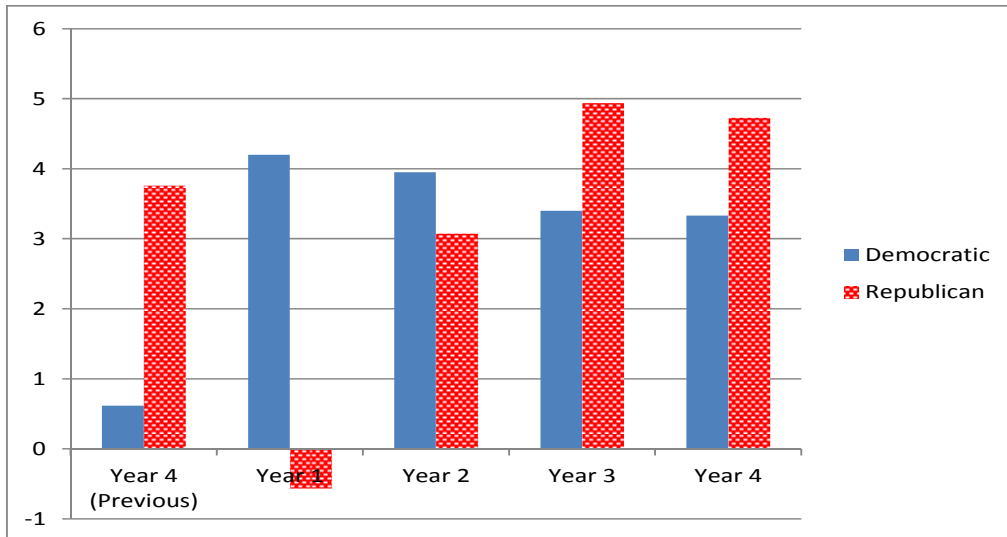


Figure 2

A. Growth rates by year, within all 16 terms

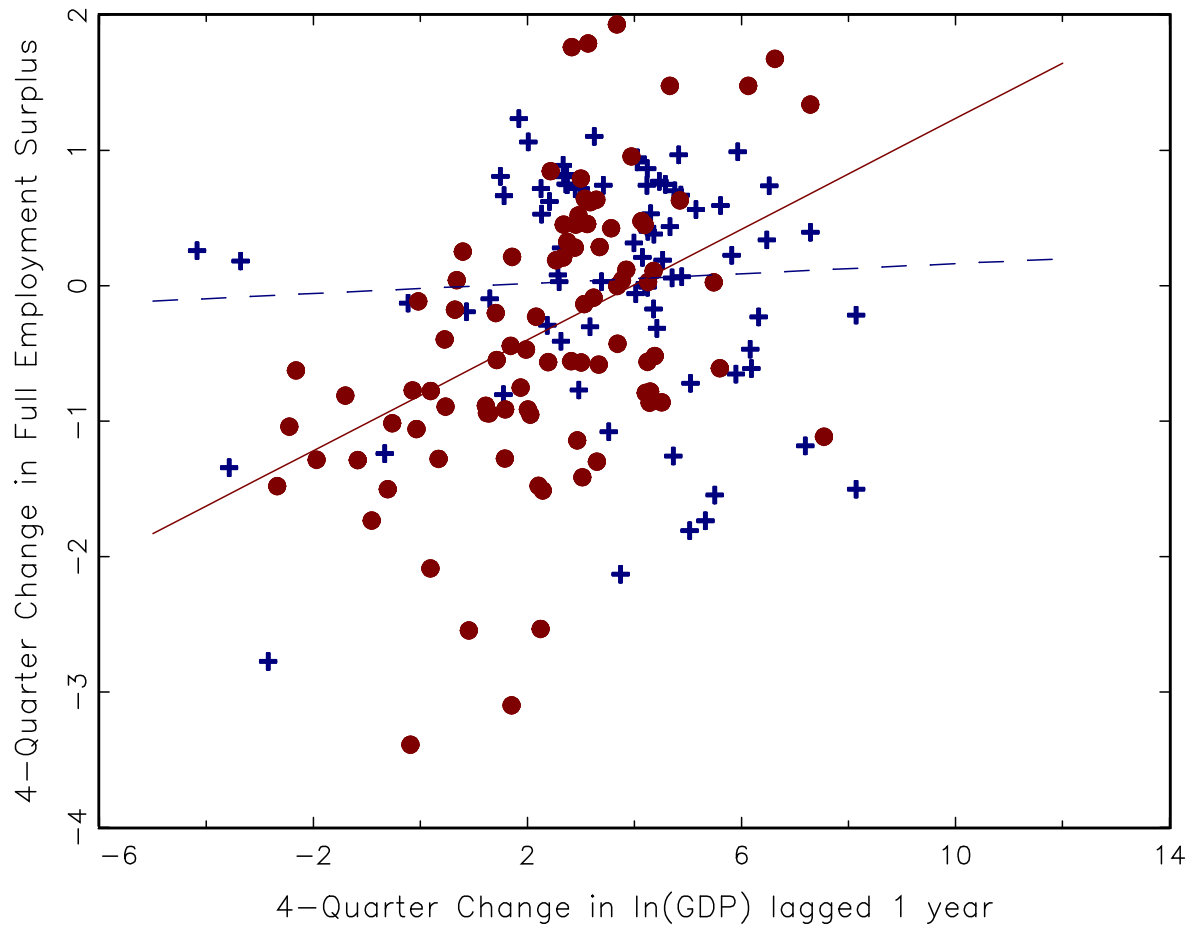


B. Growth rates by year, only for terms preceded by a president of the opposite party



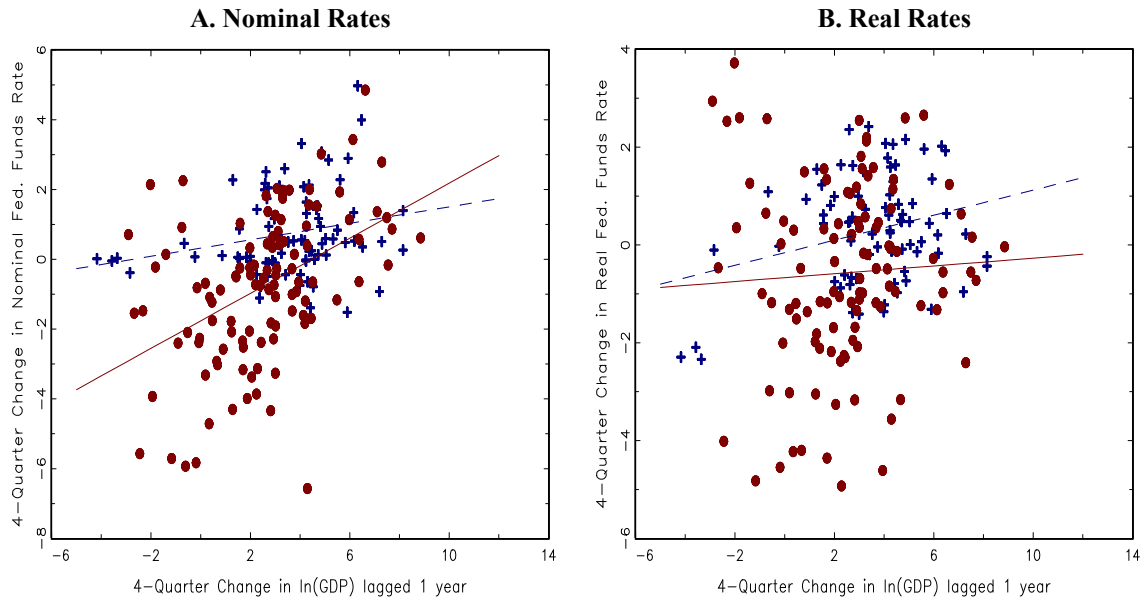
Notes: Panel A shows average growth rates in each year of Democratic and Republican terms for each of the 16 terms in our sample. Panel B shows average growth rates in each year of the eight terms preceded by a president of the opposite party (Eisenhower-1, Kennedy-Johnson, Nixon, Carter, Reagan-1, Clinton-1, Bush II-1, and Obama-1).

Figure 3
Change in full employment surplus and lagged GDP growth



Democrats: + and dashed line
Republicans: circles and solid line

Figure 4
Change in Federal Funds rate and lagged GDP growth



Democrats: + and dashed line
Republicans: circles and solid line

Table 1
Average values by party of president

Variable	Democratic	Republican	Difference	<i>p</i> -value
A. GDP and Recessions				
GDP (GR)	4.35 (0.57) [0.46]	2.54 (0.33) [0.45]	1.80 (0.66) [0.64]	0.01
Quarters-in-Recession	1.14 (0.51) [0.56]	4.56 (0.78) [1.03]	-3.41 (0.93) [1.13]	0.01
B. Other Output Measures				
GDP Per Capita (GR)	3.11 (0.46) [0.41]	1.35 (0.36) [0.45]	1.76 (0.58) [0.61]	0.01
Nonfarm Business Output (GR)	4.82 (0.56) [0.52]	2.67 (0.44) [0.61]	2.15 (0.71) [0.80]	0.01
Industrial Production (GR)	5.56 (0.96) [0.84]	1.79 (0.61) [0.93]	3.77 (1.14) [1.24]	0.00
C. Employment and Unemployment				
Employment (Payroll) (GR)	2.59 (0.41) [0.36]	1.17 (0.32) [0.38]	1.42 (0.52) [0.49]	0.02
Employee Hours (NFB) (GR)	2.22 (0.31) [0.39]	0.57 (0.39) [0.50]	1.65 (0.50) [0.58]	0.01
Employment (HH) (GR)	1.76 (0.28) [0.25]	1.20 (0.26) [0.31]	0.56 (0.38) [0.37]	0.17
Unemployment Rate (Level, PP)	5.64 (0.67) [0.41]	6.01 (0.41) [0.29]	-0.38 (0.78) [0.47]	0.62
Unemployment Rate (Change, PP)	-0.83 (0.42)	1.09 (0.45)	-1.91 (0.62)	0.01
D. Stock Returns and Corporate Profits				
Returns SP500 Index (PP)	8.08 (2.00) [2.57]	2.70 (2.84) [3.20]	5.39 (3.48) [4.23]	0.17
Corporate Profits (Share of GDI)	5.62 (0.32) [0.23]	4.74 (0.20) [0.16]	0.88 (0.38) [0.27]	0.03
E. Real Wages and Productivity				
Compensation/Hour (GR)	1.81 (0.54) [0.35]	1.43 (0.34) [0.27]	0.38 (0.64) [0.43]	0.54
Ouput/Hour NFB (GR)	2.55 (0.46) [0.37]	2.08 (0.31) [0.30]	0.46 (0.55) [0.49]	0.39
TFP (GR)	1.89 (0.47) [0.37]	0.86 (0.31) [0.35]	1.03 (0.56) [0.53]	0.08
TFP (Util Adj) (GR)	1.35 (0.37) [0.30]	1.16 (0.25) [0.28]	0.19 (0.45) [0.39]	0.66
F. Structural Government Surplus				
Surplus/Pot.GDP (PP)	-1.51 (0.86) [0.48]	-2.20 (0.22) [0.24]	0.69 (0.89) [0.51]	0.43

Table 1 (Continued)

Variable	Democratic	Republican	Difference	<i>p</i>-value
G. Inflation				
Inflation PCED (Level, PP)	2.97 (0.95) [0.59]	3.32 (0.63) [0.41]	-0.35 (1.14) [0.68]	0.73
Inflation GDPD (Level, PP)	2.88 (0.88) [0.55]	3.44 (0.60) [0.39]	-0.56 (1.06) [0.64]	0.59
Inflation PCED (Change, PP)	1.05 (0.67)	-0.83 (0.87)	1.88 (1.10)	0.12
Inflation GDPD (Change, PP)	0.94 (0.69)	-0.82 (0.84)	1.75 (1.09)	0.15
H. Interest Rates				
3 Month T-bill Rate (Level, PP)	4.01 (1.10) [0.66]	4.87 (0.92) [0.58]	-0.86 (1.44) [0.82]	0.56
Federal Funds Rate (Level, PP)	4.75 (1.36) [0.82]	5.55 (1.10) [0.69]	-0.79 (1.75) [0.99]	0.65
3 Month T-bill Rate (Change, PP)	1.75 (0.91)	-1.47 (0.59)	3.22 (1.09)	0.00
Federal Funds Rate (Change, PP)	2.34 (1.37)	-2.09 (0.72)	4.42 (1.55)	0.00

Notes: The units for each variable are given in parentheses in the first column: GR denotes growth rate in percentage points at an annual rate; PP denotes percentage points; Change denotes average value in last year of term minus average value in last year of previous term. The numbers in parentheses are standard errors computed by clustering observations by term; the numbers in brackets are Newey-West standard errors computed using 6 lags. The *p*-value in the last column is for a nonparametric test of the null hypothesis of no difference between the parties. The sample period for the structural government surplus begins with Kennedy-Johnson, and for the Federal Funds Rate with Eisenhower-2. For all other series the sample begins with Truman-2.

Table 2
Average GDP growth by presidential attribute

Attribute	terms	With	Without	Difference	p-value
<i>Political Party</i>					
Democrat	7	4.35 (0.57) [0.46]	2.54 (0.33) [0.45]	1.80 (0.66) [0.64]	0.01
<i>Other Attributes</i>					
Congressional experience	7	3.84 (0.73) [0.56]	2.94 (0.36) [0.43]	0.91 (0.81) [0.70]	0.25
Gubernatorial experience	7	3.06 (0.45) [0.47]	3.54 (0.59) [0.47]	-0.48 (0.74) [0.65]	0.55
Youngest half	8	3.78 (0.41) [0.38]	2.89 (0.63) [0.57]	0.89 (0.75) [0.68]	0.26
Tallest half	8	3.67 (0.46) [0.40]	2.99 (0.61) [0.55]	0.67 (0.77) [0.68]	0.39

Notes: The table shows average GDP growth rates for presidents with and without the attribute shown in the first column, where the value of *terms* denotes the number of administration whose presidents have the attribute. (The total number of administrations is 16.) Standard errors shown in parentheses and brackets and *p*-value shown in the final column are computed as in Table 1.

Table 3
Average GDP Growth under presidents and by Congressional control

Partisan control of Congress	Party of President		All
	Democrat	Republican	
Democrats control both houses	4.69 (0.58) [80]	2.37 (0.56) [88]	3.47 (0.47) [168]
Divided Congress	2.30 (0.44) [8]	2.80 (1.07) [32]	2.70 (0.87) [40]
Republicans control both houses	3.88 (0.44) [24]	2.84 (0.84) [24]	3.36 (0.53) [48]
All	4.35 (0.46) [112]	2.54 (0.45) [144]	3.33 (0.34) [256]

Notes: Entries are average growth rates in real GDP (in percentage points at an annual rate) by party of the President and partisan control of Congress. The numbers in parentheses are standard errors (Newey-West with 6 lags) and the numbers in brackets are the number of quarters.

Table 4
Growth rates of real GDP: deviations from trends

Trend Specification	Averages			
	Democratic	Republican	Difference	<i>p</i> -value
Benchmark value of κ				
$\kappa = \infty$	1.06 (0.57) [0.46]	-0.74 (0.33) [0.45]	1.80 (0.66) [0.64]	0.01
Alternative values of κ				
$\kappa = 100$	1.05 (0.37) [0.39]	-0.77 (0.31) [0.45]	1.82 (0.48) [0.59]	0.00
$\kappa = 67$	1.06 (0.34) [0.38]	-0.75 (0.31) [0.45]	1.81 (0.45) [0.59]	0.00
$\kappa = 33$	0.89 (0.26) [0.35]	-0.57 (0.24) [0.44]	1.46 (0.36) [0.57]	0.00

Notes: Values are in percentage points at an annual rate. The trends corresponding to these κ values are plotted in Figure A.2 in the appendix. See notes to Table 1.

Table 5
GDP growth rate forecasts

	Democratic	Republican	Difference
<i>A. SPF Forecasts: average growth rate in first year of term (Nixon – Obama-1)</i>			
Forecast	3.1	3.2	-0.1
Actual	3.5	1.0	2.5
<i>B. Greenbook Forecasts: average growth in first year of term (Nixon/Ford – Bush-II-2)</i>			
Forecast	3.8	2.8	1.0
Actual	3.8	1.1	2.7
<i>C. Time Series Model Forecasts: average growth rate in first year of term (Nixon – Obama-1)</i>			
AR Forecast	2.2	3.1	-0.9
VAR Forecast	3.0	2.5	0.5
AR-NL Forecast	2.9	3.0	-0.1
Actual	3.4	1.4	2.0
<i>D. Time Series Model Forecasts: average growth rate in first year of term (Truman-2 – Obama-1)</i>			
AR	2.9	3.5	-0.6
VAR	3.2	3.2	0.0
AR-NL Forecast	3.4	3.2	0.2
Actual	4.7	0.6	4.1

Notes: Detailed results are presented in appendix Table A.5. Forecasts for the AR model are fitted values from regressions of $\ln(GDP_{t+4}/GDP_t)$ onto current and four lags of $\ln(GDP_t/GDP_{t-1})$; the VAR model additionally includes current and 4 lags of the Aaa-3MonthTbill spread. The AR-NL model augments the AR specification with current and 4 lags of an indicator variable for a recession at time t , R_t , and interactions of R_t and $\ln(GDP_t/GDP_{t-1})$.

Table 6
Shocks and the DR-Gap

	Shock	Sample Period	\bar{R}^2	DR - Gap	
				Total	Explained
1	Oil Shocks (Hamilton)	1949:Q2-2013:Q1	0.13	1.80 (0.64)	0.50 (0.10)
2	Oil Shocks (Killian)	1972:Q3 - 2004:Q3	0.05	0.82 (0.76)	0.21 (0.19)
3	TFP Utilization Adj (Fernald)	1949:Q2 - 2013:Q1	0.26	1.80 (0.64)	0.42 (0.11)
4	TFP Utilization Adj (Annual	1949 - 2012	0.14	1.79 (0.58)	0.46 (0.13)
5	Labor Productivity (SVAR, Gali)	1950:Q3 - 2013:Q1	0.09	1.73 (0.61)	0.21 (0.07)
6	Defense Spending (Ramey)	1949:Q2 - 2012:Q3	0.03	1.87 (0.64)	0.20 (0.05)
7	Defense Spending (Fisher-Peters)	1949:Q2 - 2008:Q4	0.00	2.13 (0.65)	0.02 (0.06)
8	International (GDP Growth Europe)	1962:Q4 - 2012:Q3	0.16	1.33 (0.63)	0.19 (0.05)
9	Taxes (Romer and Romer)	1949:Q2 - 2007:Q4	0.00	1.97 (0.64)	0.01 (0.06)
10	Taxes (Mertens and Ravn)	1951:Q3 - 2006:Q4	-0.05	1.68 (0.61)	-0.03 (0.11)
11	Government Spending (SVAR)	1952:Q3 - 2006:Q4	0.04	1.72 (0.63)	0.06 (0.02)
12	Monetary Policy (Romer and Romer)	1970:Q3 - 1996:Q4	0.20	0.47 (0.95)	-0.09 (0.17)
13	Monetary Policy SVAR (Sims and Zha)	1961:Q4 - 2003:Q1	0.16	1.50 (0.70)	0.05 (0.13)
14	Monetary Policy SVAR (Cholesky)	1957:Q2 - 2008:Q4	0.06	1.78 (0.64)	-0.23 (0.12)
15	Baa-Aaa Spread	1949:Q4 - 2013:Q1	0.06	1.85 (0.65)	0.21 (0.13)
16	EBP Spread (Gilchrist-Zakrajšek)	1975:Q3 - 2012:Q4	0.04	0.66 (0.69)	0.33 (0.26)
17	Ted Spread	1973:Q3 - 2013:Q1	0.22	0.93 (0.69)	-0.02 (0.03)
18	FRB SLOOS	1972:Q3 - 2013:Q1	0.20	0.77 (0.67)	-0.24 (0.10)
19	Index of Consumer Sent. Current (ICC)	1962:Q3 - 2013:Q1	0.10	1.26 (0.63)	0.03 (0.04)
20	Index of Consumer Expectations (ICE)	1962:Q3 - 2013:Q1	0.13	1.26 (0.63)	0.33 (0.09)
21	Uncertainty Index (BBD)	1949:Q4 - 2012:Q4	0.04	1.88 (0.65)	-0.18 (0.06)

Notes: The “Total” DR-gap is the difference in the average growth rate or real GDP under Democratic and Republican presidents for the sample period shown. The “Explained” gap is computed from (2) using the shock shown and $k=1$. The R^2 is the marginal R^2 for the current and lagged values of the shocks. Newey-West (6 quarterly lags) standard errors are shown in parentheses.

Table 7
The effect of shocks on GDP growth rates by Presidential term

	Shock	Smpl.	Democratic							Republican								
			Tr	KJ	Jo	Ca	C11	C12	Ob1	Ei1	Ei2	Ni	NF	Re1	Re2	BI	BI1	BI2
1	Oil Shocks (Hamilton)	49:2-13:1	0.87	0.84	0.79	-1.34	0.65	-0.24	0.39	0.52	0.58	0.48	-1.53	-0.28	0.84	-0.45	0.32	-2.45
2	Oil Shocks (Killian)	72:3-04:3	.	.	.	-0.24	0.34	0.30	.	.	.	0.08	0.01	0.19	-0.55	-0.16	.	
3	TFP Utilization Adj (Fernald)	49:2-13:1	1.11	1.17	0.13	-0.38	-0.20	0.12	-0.30	0.07	-0.27	0.09	-0.05	-0.79	0.07	-0.61	0.52	-0.66
4	TFP Utilization Adj (Annual)	49-12	1.09	1.31	0.46	-0.34	-0.31	0.08	-0.48	0.60	-0.48	-0.10	-0.06	-1.21	0.27	-0.67	0.39	-0.54
5	Labor Prod. (SVAR, Gali)	50:3-13:1	0.70	0.41	0.02	-0.06	-0.13	0.01	0.08	0.13	-0.33	-0.13	-0.30	-0.31	0.10	-0.18	0.37	-0.15
6	Defense Spending (Ramey)	49:2-12:3	1.06	-0.03	0.02	0.05	-0.08	-0.08	-0.15	-0.11	-0.02	-0.09	-0.08	-0.11	-0.19	-0.17	0.01	-0.02
7	Defense Spending (Fisher-Peters)	49:2-08:4	-0.05	-0.08	0.18	0.23	0.18	-0.40	.	0.20	-0.09	-0.22	-0.04	-0.11	-0.09	-0.12	0.33	0.08
8	International (GDP Gr. Europe)	62:4-12:3	.	0.55	0.37	-0.77	0.08	0.58	-0.02	.	.	0.94	-0.76	-0.44	0.85	-0.61	0.12	-0.69
9	Taxes (Romer and Romer)	49:2-07:4	-0.02	0.16	0.40	-0.04	-0.34	-0.13	.	0.00	-0.23	0.09	-0.09	0.66	-0.32	-0.42	0.52	-0.37
10	Taxes (Mertens and Ravn)	51:3-06:4	.	0.02	-0.02	0.06	-0.17	0.00	.	-0.05	0.00	-0.15	-0.07	-0.13	0.49	-0.02	0.05	.
11	Government Spend. (SVAR)	52:3-06:4	.	-0.06	-0.08	-0.12	0.02	0.10	.	-0.17	0.19	-0.12	0.21	0.07	-0.19	-0.17	-0.03	.
12	Mon. Pol. (Romer and Romer)	70:3-96:5	.	.	.	0.75	-0.94	1.89	0.34	-1.10	0.10	-0.50	.	.
13	Mon. Pol. SVAR (Sims and Zha)	61:4-03:1	.	-0.27	0.39	0.06	0.02	-0.11	.	.	.	0.19	0.19	-1.73	0.92	-0.13	0.86	.
14	Mon. Pol. SVAR (Cholesky)	57:2-08:4	.	0.16	0.29	-0.67	-0.30	-0.18	.	.	-0.79	0.34	0.42	-0.73	0.71	0.06	0.93	-0.26
15	Baa-Aaa Spread	49:4-13:1	0.05	0.33	-0.05	-0.42	0.39	0.06	0.47	0.47	0.18	-0.03	-0.29	-0.66	-0.24	0.28	0.14	-0.67
16	EBP Spread (Gilchrist-Zakrajšek)	75:3-12:4	.	.	.	0.26	0.38	-0.17	0.31	-0.35	-0.35	-0.08	0.05	-0.05
17	Ted Spread	73:3-13:1	.	.	.	-1.28	0.34	0.26	0.63	.	.	.	-0.24	-0.18	0.12	0.62	0.65	-0.93
18	FRB SLOOS	72:3-23:1	.	.	.	-1.12	0.04	0.15	0.36	.	.	.	0.05	1.00	0.72	-0.13	-0.11	-0.95
19	Index of Cons Sent. Current (ICC)	62:3-13:1	.	-0.32	-0.58	-0.86	1.07	0.99	-0.32	.	.	-0.38	-0.66	0.17	0.58	-0.16	0.47	-0.10
20	Index of Cons Expectations (ICE)	62:3-13:1	.	0.83	0.68	-1.64	0.57	1.43	-0.59	.	.	0.10	-0.77	0.71	0.21	-0.54	0.16	-0.91
21	Uncertainty Index (BBD)	49:4-12:4	0.44	0.00	-0.44	-0.36	0.08	0.20	-0.61	0.67	0.66	0.12	-0.34	0.15	-0.33	0.08	-0.31	0.00

Note: The entries are the sample averages of $\hat{\gamma}(L)e_t$ over the Presidential terms minus the full-sample average, where $\gamma(L)$ is estimated using (1) with $k=1$, and the shock and sample period shown in the table.

Table 8
Average GDP growth rates excluding selected terms

	Democratic	Republican	Difference	p-value
Benchmark (all administrations)	4.35 (0.57) [0.46]	2.54 (0.33) [0.45]	1.80 (0.66) [0.64]	0.01
Excluding				
Truman-2, Eisenhower-1	3.98 (0.52) [0.42]	2.52 (0.38) [0.48]	1.42 (0.64) [0.62]	0.04
Johnson, Nixon	4.25 (0.67) [0.51]	2.42 (0.35) [0.48]	1.83 (0.75) [0.69]	0.02
Bush-I, Bush-II-1	4.35 (0.57) [0.46]	2.58 (0.43) [0.56]	1.77 (0.72) [0.72]	0.03
Truman-2, Eisenhower-1 Johnson, Nixon	3.78 (0.59) [0.44]	2.39 (0.47) [0.55]	1.39 (0.76) [0.68]	0.09
Truman-2, Eisenhower-1 Johnson, Nixon Bush-I, Bush-II-1	3.78 (0.59) [0.44]	2.35 (0.57) [0.69]	1.43 (0.82) [0.81]	0.11
Bush-II-2, Obama	4.73 (0.51) [0.48]	2.79 (0.25) [0.45]	1.93 (0.57) [0.67]	0.00

Notes: See notes to Table 1.

Table 9
Average GDP Growth under presidents and FRB chairs

Party of FRB Chair	Party of President		All
	Democrat	Republican	
Democrats	5.27 (0.70) [60]	2.73 (0.76) [60]	4.00 (0.54) [120]
Republican	3.28 (0.37) [52]	2.41 (0.53) [84]	2.74 (0.39) [136]
All	4.35 (0.46) [112]	2.54 (0.45) [144]	3.33 (0.34) [256]

Notes: Entries are average growth rates in real GDP (in percentage points at an annual rate) by party of the President and FRB Chair. (The party of the FRB Chair corresponds to the party of the President who first appointed the Chair.) The numbers in parentheses are standard errors (Newey-West with 6 lags) and the numbers in brackets are the number of quarters.

Table 10
Multiple shocks and the D-R gap

A. Estimated effects over different sub-samples, two and three variable models

	Sample Period	D-R Gap		Effect on D-R Gap			
		Total	Explained	Oil Prices (Hamilton)	TFP (Fernald)	Variable	Effect
1	49:2-12:3	1.87	1.02 (0.11)	0.49 (0.10)	0.31 (0.10)	Defense (Ramey)	0.22 (0.04)
2	53:2-12:3	1.50	0.64 (0.14)	0.37 (0.09)	0.24 (0.06)	Defense (Ramey)	0.02 (0.11)
3	49:2-08:4	2.13	0.80 (0.12)	0.48 (0.12)	0.30 (0.13)	Defense (F-P)	0.03 (0.06)
4	72:3-04:3	0.82	0.14 (0.20)		-0.11 (0.14)	Oil Supply (Kilian)	0.26 (0.15)
5	50:3-13:1	1.73	0.63 (0.13)	0.42 (0.10)		Lab. Prod. (Gali)	0.22 (0.07)
6	62:4-12:3	1.33	0.55 (0.11)	0.32 (0.13)	0.10 (0.08)	International	0.13 (0.04)
7	49:2-07:4	1.97	0.62 (0.11)	0.31 (0.11)	0.30 (0.12)	Taxes (R-R)	0.02 (0.06)
8	51:3-06:4	1.68	0.51 (0.11)	0.19 (0.11)	0.32 (0.09)	Taxes (M-R)	0.01 (0.08)
9	52:3-06:4	1.72	0.58 (0.09)	0.18 (0.09)	0.37 (0.08)	Gov. Spending	0.03 (0.01)
10	70:3-96:4	0.47	-0.21(0.26)	-0.12 (0.13)	0.04 (0.19)	Mon. Pol. (R-R)	-0.13 (0.08)
11	61:4-03:1	1.50	0.47 (0.16)	0.17 (0.13)	0.12 (0.14)	Mon. Pol. (S-Z)	0.18 (0.13)
12	57:2-08:4	1.78	0.45 (0.21)	0.30 (0.12)	0.23 (0.12)	Mon. Pol. (C)	-0.08 (0.14)
13	72:3-13:1	0.77	0.23 (0.20)	0.33 (0.11)	0.00 (0.06)	SLOOS	-0.10 (0.11)
14	49:4-13:1	1.85	0.73 (0.11)	0.46 (0.11)	0.31 (0.08)	Baa-Aaa	-0.04 (0.10)
15	75:3-12:4	0.66	0.48 (0.19)	0.21 (0.08)	0.04 (0.06)	G-Z	0.23 (0.15)
16	73:3-13:1	0.93	0.40 (0.16)	0.39 (0.12)	0.02 (0.05)	TED	-0.02 (0.03)
17	62:3-13:1	1.26	0.62 (0.13)	0.41 (0.15)	0.22 (0.08)	ICC	0.00 (0.04)
18	62:3-13:1	1.26	0.78 (0.14)	0.41 (0.14)	0.19 (0.08)	ICE	0.19 (0.09)
19	49:4-12:4	1.88	0.64 (0.11)	0.41 (0.11)	0.33 (0.06)	Uncertainty	-0.11 (0.05)

B. Estimated Effects, 1949:Q4-2012:Q3, (D-R Gap = 1.92)

	Explained	Variable				
		Oil Prices	TFP	Defense Sp.	Baa-Aaa	Uncertainty
1	0.99 (0.10)	0.45 (0.11)	0.32 (0.07)	0.22 (0.04)		
2	0.94 (0.13)	0.47 (0.11)	0.30 (0.08)	0.22 (0.04)	-0.04 (0.10)	
3	0.88 (0.11)	0.41 (0.11)	0.34 (0.07)	0.23 (0.04)		-0.10 (0.05)
4	0.84 (0.14)	0.44 (0.11)	0.33 (0.07)	0.22 (0.04)	-0.06 (0.09)	-0.10 (0.05)

C. Estimated Effects, 1962:Q4-2012:Q3, (D-R Gap = 1.33)

	Explained	Variable				
		Oil Prices	TFP	International	Baa-Aaa	ICE
1	0.55 (0.11)	0.32 (0.13)	0.10 (0.08)	0.13 (0.04)		
2	0.48 (0.18)	0.36 (0.13)	0.09 (0.09)	0.14 (0.05)	-0.10 (0.16)	
3	0.63 (0.12)	0.29 (0.13)	0.10 (0.08)	0.11 (0.05)		0.13 (0.08)
4	0.54 (0.10)	0.34 (0.13)	0.13 (0.08)	0.12 (0.04)		-0.04 (0.04)
5	0.50 (0.17)	0.31 (0.13)	0.12 (0.09)	0.12 (0.05)	-0.12 (0.14)	0.09 (0.09)

Notes: Standard errors (Newey-West 6 lags) are shown in parentheses.

Table 11
Average GDP growth rates for different countries

Country	Sample Period	Political Party		Difference
		Left	Right	
United States	1949:Q2 – 2013:Q1	4.35 (0.46)	2.54 (0.45)	1.80 (0.64)
Canada	1961:Q2 – 2012:Q2	3.89 (0.38)	2.48 (0.71)	1.41 (0.80)
France	1949:Q2 – 2012:Q2	3.19 (0.51)	3.42 (0.50)	-0.23 (0.72)
Germany	1970:Q2 -2012:Q2	2.18 (0.55)	2.17 (0.51)	0.02 (0.75)
United Kingdom	1955:Q2 – 2012:Q2	2.47 (0.47)	2.67 (0.49)	-0.20 (0.70)

Notes: Standard errors (Newey-West 6 lags) are shown in parentheses.

Appendix A: Data sources

The table below lists the data series, sources, and miscellaneous notes about the data used in this paper.

Series	Source	Notes
<i>Data used in Figure 1</i>		
Real GDP	FRED: GDPC96	
<i>Additional Series Used in Table 1</i>		
Quarters-in-Recession	NBER	
GDP Per Capita	FRED: A939RC0Q052SBEA	The nominal series from FRED is deflated by the GDP deflator
Nonfarm Business Output	FRED: OUTNFB	
Industrial Production	FRED: INDPRO	
Employment (Payroll)	FRED: PAYEMS	
Employee Hours (NFB)	FRED: HOANBS	
Employment (HH)	FRED: CE16OV	
Unemployment Rate	FRED: UNRATE	
Returns SP500 Index	WRDS	
Corporate Profits (Share of GDI)	BEA	Corporate profits with inventory valuation and capital consumption adjustments, domestic industries, After Tax, from NIPA Table 1.10 Divided by GDI
Gross Domestic Income	FRED: GDI	
Compensation/Hour	FRED: COMPRNFB	
Output/Hour NFB	FRED: OPHNFB	
TFP	Supplied by John Fernald	
TFP (Util Adj)	Supplied by John Fernald	
Surplus/Pot.GDP	CBO	Net Federal Government Saving Without Automatic Stabilizers as Percent of potential output (CBO XLS File Col. Q)
PCE Deflator	FRED: PCECTPI	
GDP Deflator	FRED: GDPDEF	
<i>Additional Series Used in Table 5</i>		
Aaa bond rate	FRED: Aaa	Moody's Seasoned Aaa Corporate Bond Yield
Three month Treas. bill rate	FRED: TB3MS	3-Month Treasury Bill: Secondary Market Rate
<i>Additional Series Used in Table 6</i>		
Oil Price Shocks (Hamilton)	BLS: WPU0561	Constructed using equation (3) in the text, with O_t , WPU0561
Oil Supply Shocks (Killian)	Supplied by Lutz Killian	
Defense Spending (Ramey)	Supplied by Valerie Ramey	This is an updated version of the Ramey(2011) series from Owyang, Ramey, and Zubairy (2013).
Defense Spending (Fisher-Peters)	Supplied by Valerie Ramey	
OECD GDP Growth Europe	OECD	Growth rates were detrended using a local average with biweight kernel and $\kappa = 67$.
Taxes (Romer and Romer)	Supplied by David Romer	

Taxes (Mertens and Ravn)	Supplied by Karl Mertens	
Romer and Romer	Supplied by David Romer	
SVAR (Sims and Zha)	Supplied by Tao Zha	
Fed Funds	FRED: FEDFUNDS	
PComm	Conf. Board Indicators Data Base: UOM023	
Baa corporate bond rate	FRED: BAA	Moody's Seasoned Baa Corporate Bond Yield
EBP Spread (Gilchrist-Zakrajšek)	Supplied by Egon Zakrajšek	
Ted Spread	FRED: MED3-TB3MS	MED3 is the 3-month Eurodollar Depository Rate (London) from the FRB H.15 Release. These data are available from 1971:M1.
SLOOS	Deutsche Bank 1970:Q1-1990:Q1 FRED: DRIWCIL from 1990:Q2	FRB Senior Loans Officer Opinions. Net Percentage of Domestic Respondents Reporting Increased Willingness to Make Consumer Installment Loans
Ind. of Cons. Sen Current (ICC)	University of Michigan Survey Research Center	
Index of Consumer Expectations (ICE)	University of Michigan Survey Research Center	
Uncertainty Index (BBD)	Supplied by Steve Davis	
<i>Additional Series Used in Table 11</i>		
GDP for Canada	Statistics Canada	www.statcan.gc.ca/pub/13-019-x/2012002/t/tab0003-eng.htm
GDP for France	INSEE	www.bdm.insee.fr/bdm2/affichageSeries?idban_k=001615899&codeGroupe=1310
GDP for Germany	German Federal Statistical Office	The series can be found under “Long Term Series from 1970” at: www.destatis.de/EN/FactsFigures/NationalEconomyEnvironment/NationalAccounts/DomesticProduct/DomesticProduct.html
GDP for the United Kingdom	Office of National Statistics	www.ons.gov.uk/ons/rel/naa2/quarterly-national-accounts/q2-2012/tsd-quarterly-national-accounts-2012-q2.html
<i>Additional Series Used in Table A.4</i>		
NIPA Series	BEA	

Data Notes:

(1) Several of the series were available at a monthly frequency. Quarterly values we constructed as monthly averages.

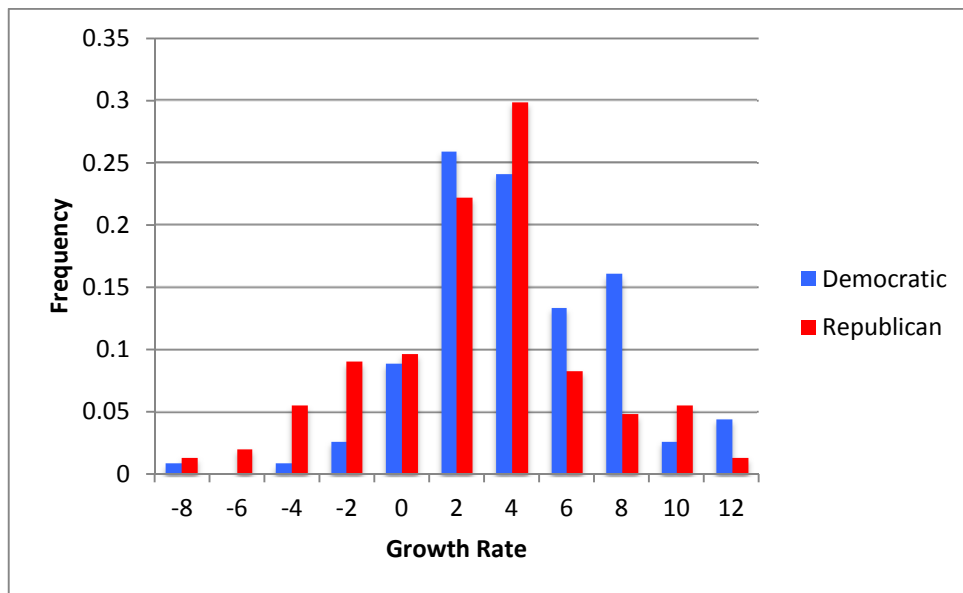
(2) Several of the variables used in Tables 6, 7 and 9 are residuals from a preliminary regression that includes four own lags and current and four lags of U.S. GDP growth rates. The variables are the interest rates spread (Aaa-Baa, Ted, and GZ excess bond premium), SLOOS, OECD GDP rates for Europe (which are also detrended using a local moving average with biweight kernel and $\kappa = 67$), ICC, ICE, and the uncertainty index.

Appendix B: Summary Statistics for GDP Growth Rates

Table A.1
Summary Statistics

	Democratic	Republican
<i>n</i>	112	144
Mean	4.35	2.54
Median	3.83	2.92
Std. Dev.	3.83	3.93
Skew.	0.72	-0.31
Kurtosis (excess)	2.2	0.54
Minimum	-7.86 (1980:4)	-9.97 (1958:1)
Maximum	16.92 (1950:1)	11.92 (1955:1)

Figure A.1: Histogram of GDP Growth Rates



Appendix C: Additional Tables and Figures

Figure A.2
GDP growth rates and different trends

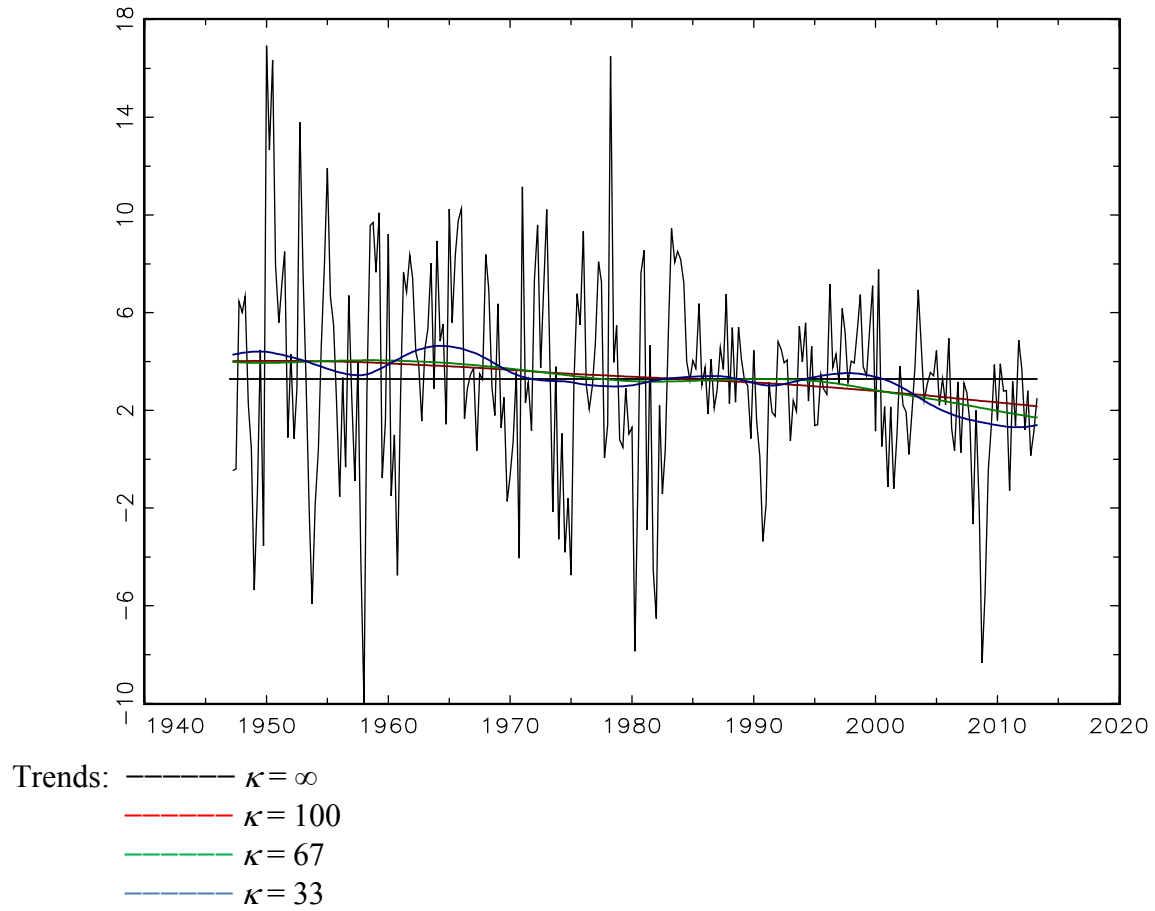


Table A.2
The D-R gap over alternative lags

Quarters Used to Compute Average	Democratic	Republican	Difference	p-value
Year 1:Q2 through Year 5:Q1 (Benchmark)	4.35 (0.57) [0.46]	2.54 (0.33) [0.45]	1.80 (0.66) [0.64]	0.01
Year 1:Q1 through Year 4:Q4	4.12 (0.54) [0.48]	2.67 (0.27) [0.42]	1.45 (0.61) [0.62]	0.03
Year 1:Q3 through Year 5:Q2	4.26 (0.60) [0.47]	2.64 (0.36) [0.45]	1.61 (0.70) [0.63]	0.03
Year 1:Q4 through Year 5:Q3	4.13 (0.57) [0.47]	2.73 (0.36) [0.45]	1.40 (0.67) [0.64]	0.05

Notes: See notes to Table 1.

Table A.3
Average GDP growth rate by term

Rank	Term	Party	Growth Rate (%)
1	Truman	D	6.57*
2	Kennedy-Johnson	D	5.74
3	Johnson 2	D	4.95
4	Clinton 2	D	4.03
5	<i>Reagan 2</i>	<i>R</i>	<i>3.89</i>
6	<i>Nixon 1</i>	<i>R</i>	<i>3.57</i>
7	Carter	D	3.56
8	Clinton 1	D	3.53
9	<i>Reagan 1</i>	<i>R</i>	<i>3.12</i>
10	<i>G.W. Bush 1</i>	<i>R</i>	<i>2.78</i>
11	<i>Eisenhower 1</i>	<i>R</i>	<i>2.72</i>
12	<i>Eisenhower 2</i>	<i>R</i>	<i>2.27</i>
13	<i>G.H.W. Bush</i>	<i>R</i>	<i>2.05</i>
14	Obama 1	D	2.06
15	<i>Nixon-Ford</i>	<i>R</i>	<i>1.97</i>
16	<i>G.W. Bush 2</i>	<i>R</i>	<i>0.54</i>

* The Truman figure drops to 5% if we include the balance of his unelected term: 1947:2 through 1949:1.

Table A.4
Average growth rates by spending component

Sector	Share	Democratic	Republican	Difference	<i>p</i> -value
GDP	1.00	4.35 (0.57) [0.46]	2.54 (0.33) [0.45]	1.80 (0.66) [0.64]	0.01
Consumption	0.63	3.93 (0.50) [0.38]	3.08 (0.35) [0.37]	0.84 (0.61) [0.52]	0.17
Goods	0.28	4.39 (0.54) [0.54]	2.84 (0.53) [0.59]	1.56 (0.76) [0.79]	0.07
Durable	0.09	8.62 (1.53) [1.51]	4.66 (1.19) [1.32]	3.96 (1.94) [2.03]	0.06
Nondurable	0.20	3.00 (0.35) [0.31]	2.21 (0.30) [0.33]	0.80 (0.46) [0.45]	0.10
Services	0.35	3.72 (0.50) [0.32]	3.42 (0.33) [0.25]	0.30 (0.60) [0.39]	0.61
Investment	0.17	8.96 (1.25) [2.01]	3.05 (1.36) [1.89]	5.91 (1.85) [2.75]	< 0.01
Fixed	0.17	6.51 (0.64) [1.04]	2.33 (1.06) [1.29]	4.18 (1.24) [1.55]	< 0.01
Nonresidential	0.12	7.46 (0.78) [1.04]	2.69 (0.67) [1.16]	4.77 (1.03) [1.47]	< 0.01
Residential	0.05	5.19 (1.16) [2.14]	2.82 (2.74) [2.90]	2.37 (2.97) [3.53]	0.57
Exports	0.08	6.28 (1.25) [1.53]	7.05 (1.78) [1.58]	-0.77 (2.18) [2.29]	0.74
Imports	-0.09	8.49 (1.46) [1.41]	6.10 (1.46) [1.47]	2.39 (2.07) [2.10]	0.27
Government	0.21	4.49 (2.33) [1.78]	1.65 (0.56) [0.51]	2.84 (2.39) [1.85]	0.19
Federal	0.10	5.41 (3.65) [3.07]	1.17 (1.19) [0.93]	4.23 (3.84) [3.20]	0.26
Defense	0.08	5.85 (4.85) [4.04]	0.79 (1.60) [1.18]	5.06 (5.11) [4.20]	0.34
Nondefense	0.03	4.80 (1.75) [1.49]	5.13 (1.30) [1.61]	-0.33 (2.18) [2.16]	0.85
State and local	0.10	3.14 (1.01) [0.73]	3.07 (0.65) [0.49]	0.06 (1.21) [0.86]	0.96

Notes: The second column shows the average nominal GDP share of the component over the 1947:Q1-2013:Q1 sample period. Standard errors shown in parentheses and brackets and *p*-value shown in the final column are computed as in Table 1.

Table A.5
Detailed forecasting results

A. Results for the SPF

	Ca	CII	CI2	Ob1		Ni	NF	Re1	Re2	BI	BII1	BII2		D	R
Actual	3.6	3.7	4.2	2.4		0.2	-0.3	-2.5	3.1	1.3	1.4	3.7		3.5	1.0
Forecast (SPF Dated Q1)	6.1	3.1	2.2	0.9		3.3*	4.3	3.0	3.7	1.6	3.2	3.5		3.1	3.2
Forecast (SPF Dated Q2)	5.8	3.1	2.4	0.7		2.5	4.0	2.5	3.3	1.6	2.2	3.3		3.0	2.8

B. Results for the Greenbook

	Ca	CII	CI2			Ni	NF	Re1	Re2	BI	BII1	BII2		D	R
Actual	3.6	3.7	4.2			0.2	-0.3	-2.5	3.1	1.3	1.4	3.7		3.8	1.0
Forecast	6.3	2.9	2.4				4.9	-0.1	3.3	2.0	2.8	3.9		3.8	2.8
Greenbook Date	2/9/77	1/29/93	1/29/97				2/7/73	1/28/81	2/6/85	2/1/89	1/25/01	1/26/05			
Forecast	6.2	2.5	2.2			1.7*	4.9	0.8	2.9	1.8	2.2	3.7		3.6	2.6
Greenbook Date	5/11/77	5/14/77	5/15/97			5/21/69	5/9/73	5/13/81	5/15/85	5/10/89	5/9/01	4/28/05			

C. Results for the Time Series Models (Nixon – Obama-1)

	Ca	CII	CI2	Ob1		Ni	NF	Re1	Re2	BI	BII1	BII2		D	R
Actual	4.1	3.4	4.5	1.6		0.3	0.7	-2.5	4.1	2.8	1.4	3.1		3.4	1.4
AR	2.5	2.2	2.8	1.1		2.7	3.7	4.4	2.4	3.1	2.1	3.1		2.2	3.1
VAR	3.0	3.6	2.9	2.6		1.8	3.3	1.5	3.8	2.1	1.7	3.2		3.0	2.5
AR-NL	2.5	2.5	3.1	3.7		2.9	4.0	4.6	2.8	3.2	0.4	3.0		2.9	3.0

D. Results for the Time Series Models (Truman-2 – Obama-1)

	Tr	KJ	Jo	Ca	CII	CI2	Ob1		Ei1	Ei2	Ni	NF	Re1	Re2	BI	BII1	BII2	D	R
Actual	3.8	7.3	8.1	4.1	3.4	4.5	1.6		-1.8	-2.9	0.3	0.7	-2.5	4.1	2.8	1.4	3.1	4.7	0.6
AR	1.7	3.4	4.0	3.4	2.7	3.0	2.3		3.9	3.4	3.5	3.9	4.7	3.0	3.3	2.5	3.4	2.9	3.5
VAR	1.5	3.6	3.8	3.7	3.4	3.2	3.4		3.6	2.7	3.1	3.7	3.5	4.1	2.5	2.3	3.4	3.2	3.2
AR-NL	2.2	3.9	4.0	3.2	2.6	2.9	5.3		3.7	2.4	3.5	4.3	5.4	3.3	3.0	0.5	2.8	3.4	3.2

Notes: Values are averages of GDP growth rates from Q2 of the inaugural year to Q1 of the following year. The SPF forecasts shown in panel A are from surveys dated Q1 and Q2 of the inaugural year. The actual values shown panels A and B are from the FRB Philadelphia real time data sets dated Q2 in year 3 of the administration. *Forecasts are for average growth rate in 1969:Q2-1969:Q4 because of missing data.

Table A.6
Correlation matrix of shocks

	1	2	3	4	5	6	7	8	9	10	11	12	13	14	15	16	17	18	19	20	21	
1	1.00
2	-0.11	1.00
3	-0.07	-0.07	1.00
4	0.01	0.02	0.23	1.00
5	0.00	-0.08	-0.02	0.08	1.00
6	0.07	-0.02	0.13	0.00	0.07	1.00
7	-0.21	0.10	0.02	-0.08	-0.12	-0.10	1.00
8	0.15	0.02	-0.06	0.06	0.00	-0.06	0.00	1.00
9	-0.01	0.17	-0.06	-0.07	-0.01	0.05	0.07	0.57	1.00
10	-0.01	0.13	-0.12	-0.09	-0.04	-0.01	0.09	0.41	0.38	1.00
11	-0.05	0.02	0.13	0.09	0.07	-0.09	0.07	-0.03	0.02	-0.04	1.00
12	0.06	-0.11	0.10	-0.37	0.11	0.13	-0.02	-0.13	0.01	0.04	0.03	1.00
13	-0.02	-0.20	0.07	-0.41	0.03	0.18	-0.02	-0.17	-0.01	0.08	-0.01	0.79	1.00
14	-0.01	-0.13	0.04	-0.31	0.06	0.02	0.06	-0.01	0.07	0.01	0.03	0.49	0.64	1.00
15	-0.11	0.05	-0.11	0.00	-0.06	0.08	0.04	-0.08	-0.07	-0.12	-0.03	0.06	0.02	-0.43	1.00
16	0.06	-0.15	0.08	0.19	0.03	0.02	0.05	0.09	0.01	0.05	0.07	-0.31	-0.30	0.02	-0.31	1.00
17	-0.01	-0.07	0.07	-0.02	-0.01	0.31	-0.05	-0.11	0.01	0.06	0.02	0.18	0.18	0.10	-0.04	0.34	1.00
18	0.07	-0.11	0.05	0.00	0.09	0.03	-0.10	0.07	0.01	-0.04	0.02	0.05	0.10	0.42	-0.60	0.36	0.14	1.00
19	-0.21	-0.01	-0.05	-0.17	-0.03	0.03	-0.01	-0.09	-0.03	-0.01	-0.05	0.24	0.25	-0.02	0.41	-0.41	-0.09	-0.38	1.00	.	.	.
20	-0.27	-0.04	0.05	-0.12	-0.02	0.09	0.03	-0.03	0.07	0.06	-0.06	0.07	0.22	0.04	0.17	-0.20	-0.01	-0.16	0.61	1.00	.	.
21	0.09	0.03	0.05	0.07	0.04	0.00	-0.03	0.07	0.13	0.01	0.06	-0.02	-0.06	-0.03	-0.09	0.13	0.05	0.19	-0.22	-0.34	1.00	.

Note: Time series used

Number	Series	Number	Series	Number	Series
1	Oil Shocks (Hamilton)	8	Taxes (Romer and Romer)	15	Ted Spread
2	Oil Shocks (Killian)	9	Taxes (Mertens and Ravn)	16	Baa-Aaa Spread
3	TFP Utilization Adj (Fernald)	10	Taxes (Mertens and Ravn)	17	EBP Spread (Gilchrist-Zakrajšek)
4	Labor Prod (SVAR, Gali)	11	Government Spending (SVAR)	18	FRB SLOOS
5	Defense Spending (Ramey)	12	Monetary Pol. (Romer and Romer)	19	Index of Cons. Sent. Current (ICC)
6	Defense Spending (Fisher-Peters)	13	Monetary Pol. SVAR (Sims-Zha)	20	Index of Consumer Expectations (ICE)
7	International (European growth)	14	Monetary Pol. SVAR (Cholesky)	21	Uncertainty Index (BBD)

Notes: Correlations are computed over the longest common sample period for each pair of series. Sample correlations larger than 0.30 in absolute value are show in **bold**.

Appendix D: Accounting for the D-R gap using DSGE models

In this appendix, we ask how three DSGE models account for the D-R gap. The models were estimated over different sample periods (shown in the first row of Table A.7), and use somewhat different measures of output. The well-known Smets-Wouters (2007) (SW) model uses demeaned per capita values of real GDP; the Leeper, Plante, and Traum (LPT) (2010) (LPT) model uses per capita measures, log-detrended values of consumption, investment, and government spending, with per capita GDP computed from C+I+G using a log-linear approximation; and the Schmitt-Grohé and Uribe (2012) (SGU) model use GDP growth rates. The second row of Table A.7 shows the D-R gap computed using the model-specific sample periods and data. The D-R gap ranges between 1.15 and 1.53 percentage points.

The remaining rows of the table decompose each D-R gap using realizations of the shocks for the relevant models. While the list of shocks differs substantially across models, we have tried to group the shocks into familiar categories (TFP, Investment, and so forth).⁴⁸

Neutral productivity shocks explain approximately 20 basis points of the D-R gap in each of the models. This is smaller than the approximate 30 basis points for utilization-adjusted TFP shocks shown in panel B of Table 9, although some of the difference is explained by differences in the sample periods. Both the SW and LPT models attribute much of the D-R gap to investment-specific productivity shocks, but these have little effect in the SGU model. The LPT and SGU models attribute much of the D-R gap to labor shocks (labor supply shocks in LPT, and wage markup shocks in SGU). Wage markup shocks are modestly important in the SW model, but labor supply shocks have huge effects in the LPT model. Intertemporal preference shocks have large, but inconsistent, effects across the models.

These models suggest (or impose) little role for policy in explaining the D-R gap. Monetary shocks in the SW model favor Republicans, which is consistent the evidence presented in Tables 6 and 9. Shocks to government purchases have little effect in any of the models--although the earliest sample period begins in 1955 and thus does not the Korean War. This is also consistent with our reduced-form findings. Finally, the tax and transfer shocks in the LPT model do not explain the D-R gap.

⁴⁸ For the SGU model, the TFP and Investment categories include the contributions from the stationary and non-stationary shocks in the model, and each category includes both realized and anticipated shocks. Detailed results for the SGU model are presented in appendix Table A.8.

Table A.7
Structural shock decompositions of the D-R gap

	A. Smets and Wouters	B. Leeper, Plante and Traum	C. Schmitt-Grohé and Uribe
Sample Period	1960:Q1 – 2004:Q4	1961:Q2 – 2008:Q1	1955:Q2 – 2006:Q4
Total D-R Gap	1.53	1.15	1.44
<i>Structural Shock</i>			
TFP	0.17	0.16	0.23
Investment	0.60	1.42	0.09
Preference (Intertemporal)	0.71	-1.19	-0.16
Gov. Purchases	0.14	0.04	0.04
Wage Markup	0.20		1.18
Price Markup	-0.03		
Mon. Policy	-0.26		
Preference (Intratemporal)		0.75	
Transfers		0.04	
Tax – capital		-0.04	
Tax – labor		-0.08	
Tax – cons.		0.00	

Notes: The Schmitt-Grohé Uribe model includes 21 structural shocks, and the table shows results from grouping the shocks in the categories shown in column 1. Table A.8 contains detailed results.

Table A.8
Detailed decomposition for the Schmidt-Grohé Uribe (2012) Model

Total D-R Gap	1.44
Decomposition	
Stationary Neutral Tech.	-0.06 (-0.05, -0.01, -0.01)
Non. Stat. Neutral Tech.	0.29 (0.23, 0.02, 0.05)
Stat. Investment	0.13 (0.04, 0.02, 0.07)
Non.Stat. Investment	-0.04 (-0.02, -0.01, 0.00)
Preference	-0.16 (-0.13, -0.01, -0.02)
Gov. Purchases	0.04 (0.02, 0.02, 0.01)
Wage Markup	1.18 (0.02, 1.15, 0.01)
Measurement Error	0.17
Initial Conditions	-0.11

Notes: The numbers in parentheses show the components associated with the three shocks (ε^0 , ε^4 , ε^8) in each category.